

For Research Use Only

FcZero-rAb® PerCP Anti-Mouse CD45 Rabbit Recombinant Antibody

Catalog Number:CP-FcA98035



Basic Information

Catalog Number:

CP-FcA98035

Concentration:

100ug, 200 ug/ml

Source:

Rabbit

Isotype:

IgG

Immunogen Catalog Number:

EG0845

GenBank Accession Number:

NM_001111316.2

GeneID (NCBI):

19264

UNIPROT ID:

P06800-4

Full Name:

protein tyrosine phosphatase,
receptor type, C

Calculated MW:

145 kDa

Purification Method:

Protein A purification

CloneNo.:

240356D1

Recommended Dilutions:

FC: 0.1 ug per 10⁶ cells in a 100 µl
suspension

Excitation/Emission maxima
wavelengths:

482 nm / 677 nm

Applications

Tested Applications:

FC

Species Specificity:

mouse

Positive Controls:

FC : mouse splenocytes,

Background Information

CD45, also known as protein tyrosine phosphatase, receptor type C, is a type I transmembrane protein expressed on the surface of all haematopoietic cells with the exception of erythrocytes and platelets (PMID: 3489673; 28615666). CD45 is a pan-haematopoietic cell marker and has been shown to be essential for T- and B-cell activation and signalling (PMID: 9429890; 16378097).

Storage

Storage:

Store at 2-8°C. Avoid exposure to light. Stable for one year after shipment.

Storage Buffer:

PBS with 0.09% sodium azide and 0.5% BSA, pH7.3

For technical support and original validation data for this product please contact:

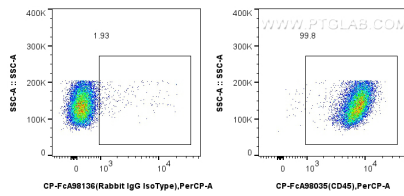
T: 4006900926

E: Proteintech-CN@ptglab.com

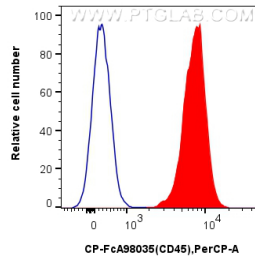
W: ptgcn.com

This product is exclusively available under Proteintech Group brand and is not available to purchase from any other manufacturer.

Selected Validation Data



1x10⁶ mouse splenocytes were surface stained with 0.1 ug PerCP Anti-Mouse CD45 Rabbit RecAb (CP-FcA98035, Clone: 240356D1) or 0.1 ug Rabbit IgG Isotype Control RecAb (CP-FcA98136, Clone: 240953C9). Cells were not fixed.



1x10⁶ mouse splenocytes were surface stained with 0.1 ug PerCP Anti-Mouse CD45 Rabbit RecAb (CP-FcA98035, Clone: 240356D1) (red) or 0.1 ug Rabbit IgG Isotype Control RecAb (CP-FcA98136, Clone: 240953C9) (blue). Cells were not fixed.