

For Research Use Only

# Cardinal Red™ Anti-Human CD11c (3.9)



Catalog Number: CR-65086

## Basic Information

<b>Catalog Number:</b> CR-65086	<b>GenBank Accession Number:</b> BC038237	<b>Purification Method:</b> Affinity purification
<b>Size:</b> 100tests, 5 µl/test	<b>GeneID (NCBI):</b> 3687	<b>CloneNo.:</b> 3.9
<b>Source:</b> Mouse	<b>ENSEMBL Gene ID:</b> ENSG00000140678	<b>Excitation/Emission maxima wavelengths:</b> 592 nm / 611 nm
<b>Isotype:</b> IgG1, kappa	<b>UNIPROT ID:</b> P20702	
	<b>Full Name:</b> integrin, alpha X (complement component 3 receptor 4 subunit)	
	<b>Calculated MW:</b> 1169 aa, 129 kDa	

## Applications

**Tested Applications:**  
FC

**Species Specificity:**  
Human

## Background Information

Integrins are cell adhesion receptors that are heterodimers composed of non-covalently associated  $\alpha$  and  $\beta$  subunits (PMID: 9779984). CD11c, also known as integrin  $\alpha$  X, is a type I transmembrane glycoprotein present on a variety of cells, including monocytes/macrophages, granulocytes, a subset of B cells, NK cells and dendritic cells (PMID: 2897326; 1680915; 1694698; 17389580). As a result of its high level of expression on most dendritic cells, CD11c is typically considered to be a marker of conventional dendritic cells (PMID: 27119555). CD11c forms an  $\alpha$  /  $\beta$  heterodimer with CD18 (integrin  $\beta$  2). CD11c/CD18 acts a receptor for fibrinogen and is important in monocyte adhesion and chemotaxis (PMID: 1671533).

## Storage

**Storage:**  
Store at 2-8°C. Avoid exposure to light. Stable for one year after shipment.

**Storage Buffer:**  
PBS with 0.09% sodium azide and 0.5% BSA.

For technical support and original validation data for this product please contact:

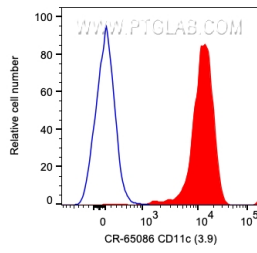
T: 4006900926

E: [Proteintech-CN@ptglab.com](mailto:Proteintech-CN@ptglab.com)

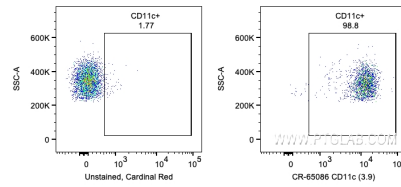
W: [ptgcn.com](http://ptgcn.com)

This product is exclusively available under Proteintech Group brand and is not available to purchase from any other manufacturer.

## Selected Validation Data



1X10<sup>6</sup> human PBMCs were surface stained with 5 ul Cardinal Red™ Anti-Human CD11c (CR-65086, Clone:3.9) (red) or unstained. Cells were not fixed. Monocytes were gated.



1X10<sup>6</sup> human PBMCs were surface stained with 5 ul Cardinal Red™ Anti-Human CD11c (CR-65086, Clone:3.9) or unstained. Cells were not fixed. Monocytes were gated.