

For Research Use Only

# Cardinal Red™ Anti-Human CD1c (L161)



Catalog Number: **CR-65176**

---

## Basic Information

Catalog Number:

CR-65176

Size:

100 tests, 5 µl/test

Source:

Mouse

Isotype:

IgG1, kappa

GenBank Accession Number:

BC126465

GeneID (NCBI):

911

UNIPROT ID:

P29017

Full Name:

CD1c molecule

Purification Method:

Affinity purification

CloneNo.:

L161

Excitation/Emission maxima  
wavelengths:

592 nm / 611 nm

---

## Applications

Tested Applications:

FC

Species Specificity:

Human

---

## Background Information

---

### Storage

Storage:

Store at 2-8°C. Avoid exposure to light. Stable for one year after shipment.

Storage Buffer:

PBS with 0.09% sodium azide and 0.5% BSA.

---

For technical support and original validation data for this product please contact:

T: 4006900926

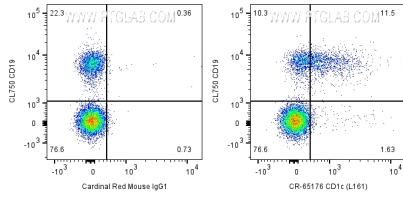
E: [Proteintech-CN@ptglab.com](mailto:Proteintech-CN@ptglab.com)

W: [ptgcn.com](http://ptgcn.com)

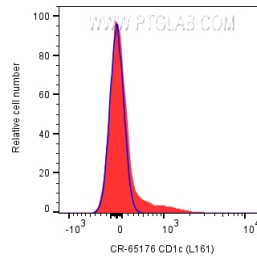
---

**This product is exclusively available under Proteintech Group brand and is not available to purchase from any other manufacturer.**

## Selected Validation Data



$1 \times 10^6$  human PBMCs were surface stained with CoraLite® Plus 750 Anti-Human CD19 and 5  $\mu$ l Cardinal Red™ Anti-Human CD1c (L161) (CR-65176) or Cardinal Red™ Mouse IgG1 Isotype Control. Cells were not fixed. Lymphocytes were gated.



$1 \times 10^6$  human PBMCs were surface stained with 5  $\mu$ l Cardinal Red™ Anti-Human CD1c (L161) (CR-65176) or Cardinal Red™ Mouse IgG1 Isotype Control. Cells were not fixed. Lymphocytes were gated.