

For Research Use Only

# Cardinal Red™ Anti-Human CD226 (11A8)



Catalog Number: CR-65247

## Basic Information

<b>Catalog Number:</b> CR-65247	<b>GenBank Accession Number:</b> BC074787	<b>Purification Method:</b> N/A
<b>Size:</b> 100tests, 5 µl/test	<b>GeneID (NCBI):</b> 10666	<b>CloneNo.:</b> 11A8
<b>Source:</b> Mouse	<b>ENSEMBL Gene ID:</b> ENSG00000150637	<b>Excitation/Emission maxima wavelengths:</b> 592 nm / 611 nm
<b>Isotype:</b> IgG1, kappa	<b>UNIPROT ID:</b> Q15762	
	<b>Full Name:</b> CD226 molecule	
	<b>Calculated MW:</b> 336 aa, 39 kDa	

## Applications

**Tested Applications:**  
FC

**Species Specificity:**  
Human

## Background Information

CD226 (DNAM-1) is a ~65 kDa glycoprotein expressed on the surface of NK cells, platelets, monocytes and a subset of T cells. It is a member of the Ig-superfamily containing 2 Ig-like domains of the V-set. CD226 mediates cellular adhesion of platelets and megakaryocytic cells to vascular endothelial cells. The protein also plays a role in megakaryocytic cell maturation. Interactions of CD226 and its ligands, CD155 and CD112, induce NK and T cell-mediated cytotoxicity and cytokine secretion (PMID: 15039383).

## Storage

**Storage:**  
Store at 2-8°C. Avoid exposure to light. Stable for one year after shipment.

**Storage Buffer:**  
PBS with 0.09% sodium azide and 0.5% BSA.

For technical support and original validation data for this product please contact:

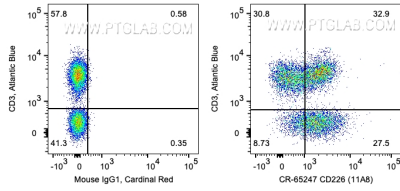
T: 4006900926

E: [Proteintech-CN@ptglab.com](mailto:Proteintech-CN@ptglab.com)

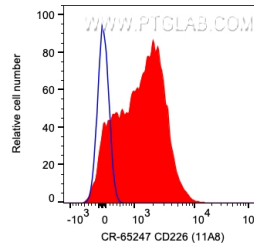
W: [ptgcn.com](http://ptgcn.com)

**This product is exclusively available under Proteintech Group brand and is not available to purchase from any other manufacturer.**

## Selected Validation Data



1X10<sup>6</sup> human PBMCs were surface co-stained with Atlantic Blue Anti-Human CD3 and 5 ul Cardinal Red™ Anti-Human CD226 (CR-65247, Clone:11A8) or Mouse IgG1 Isotype Control. Cells were not fixed. Lymphocytes were gated.



1X10<sup>6</sup> human PBMCs were surface stained with 5 ul Cardinal Red™ Anti-Human CD226 (CR-65247, Clone:11A8) or Mouse IgG1 Isotype Control. Cells were not fixed. Lymphocytes were gated.