

For Research Use Only

Cardinal Red™-conjugated PARP1 Monoclonal antibody



Catalog Number: CR-66520

Basic Information

Catalog Number: CR-66520	GenBank Accession Number: BC037545	Purification Method: Protein G purification
Size: 1000 µg/ml	GeneID (NCBI): 142	CloneNo.: 1D7D4
Source: Mouse	UNIPROT ID: P09874	Excitation/Emission maxima wavelengths: 592 nm / 611 nm
Isotype: IgG1	Full Name: poly (ADP-ribose) polymerase 1	
Immunogen Catalog Number: AG19173	Calculated MW: 1014 aa, 113 kDa	
	Observed MW: 113-116 kDa, 85-89 kDa	

Applications

Tested Applications:
FC (Intra)

Species Specificity:
Human, mouse, rat

Background Information

PARP1 (poly(ADP-ribose) polymerase 1) is a nuclear enzyme catalyzing the poly(ADP-ribosyl)ation of many key proteins in vivo. The normal function of PARP1 is the routine repair of DNA damage. Activated by DNA strand breaks, the PARP1 is cleaved into an 85 to 89-kDa COOH-terminal fragment and a 24-kDa NH2-terminal peptide by caspases during the apoptotic process. The appearance of PARP fragments is commonly considered as an important biomarker of apoptosis. In addition to caspases, other proteases like calpains, cathepsins, granzymes and matrix metalloproteinases (MMPs) have also been reported to cleave PARP1 and gave rise to fragments ranging from 42-89-kDa. This antibody was generated against the N-terminal region of human PARP1 and it recognizes the full-length as well as the cleavage of the PARP1.

Storage

Storage:
Store at -20°C. Avoid exposure to light. Stable for one year after shipment.

Storage Buffer:
PBS with 50% Glycerol, 0.05% Proclin300, 0.5% BSA, pH 7.3.

Aliquoting is unnecessary for -20°C storage

For technical support and original validation data for this product please contact:

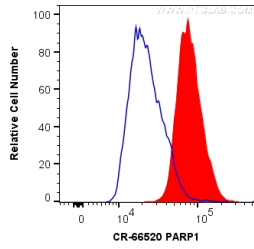
T: 4006900926

E: Proteintech-CN@ptglab.com

W: ptgcn.com

This product is exclusively available under Proteintech Group brand and is not available to purchase from any other manufacturer.

Selected Validation Data



1X10⁶ HeLa cells were intracellularly stained with 0.2 ug Cardinal Red™ Anti-Human PARP1 (CR-66520, Clone:1D7D4) (red), and the control used was, rabbit IgG Texas Red (blue). Cells were fixed and permeabilized with Transcription Factor Staining Buffer Kit (PF00011).