

For Research Use Only

Recombinant Human CD209 protein (His Tag)



Catalog Number: Eg0062

Basic Information

Species:
Human

Purity:
>90 %, SDS-PAGE

Tag:
His Tag

Technical Specifications

Purity:

>90 %, SDS-PAGE

Endotoxin Level:

<0.1 EU/ μ g protein, LAL method

Source:

HEK293-derived Human CD209 protein Gln59-Ala404 (Accession# Q9NNX6-1) with a His tag at the N-terminus.

GeneID:

30835

Accession:

Q9NNX6-1

Predicted Molecular Mass:

40.5 kDa

SDS-PAGE:

39-45 kDa, reducing (R) conditions

Formulation:

Lyophilized from 0.22 μ m filtered solution in PBS, pH 7.4. Normally 5% trehalose and 5% mannitol are added as protectants before lyophilization.

Biological Activity

Not tested

Storage and Shipping

Storage:

It is recommended that the protein be aliquoted for optimal storage. Avoid repeated freeze-thaw cycles.

- Until expiry date, -20°C to -80°C as lyophilized proteins.
- 3 months, -20°C to -80°C under sterile conditions after reconstitution.

Shipping:

The product is shipped at ambient temperature. Upon receipt, store it immediately at the recommended temperature.

Reconstitution

Briefly centrifuge the tube before opening. Reconstitute at 0.1-0.5 mg/mL in sterile water.

Background

CD209 (DC-SIGN, CLEC4L) is a C-type lectin receptor that is involved in the innate immune system and recognizes numerous evolutionarily divergent pathogens, including bacteria, viruses, and parasites. CD209 is preferentially expressed on dendritic cells (DCs). It mediates transient adhesion of DCs with T cells. It has been reported that CD209 plays a role in capture and transmission of HIV from DC to T cells.

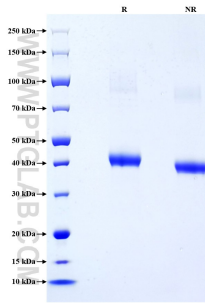
References

1. T B Geijtenbeek et al. (2000) Cell.100(5):587-97.
2. Ludovic Tailleux. et al.(2005) PLoS Med. 2(12):e381.

Synonyms

CD209, CDSIGN, CLEC4L, C-type lectin domain family 4 member L, DC SIGN

Selected Validation Data



Purity of Recombinant Human CD209 was determined by SDS-PAGE. The protein was resolved in an SDS-PAGE in reducing (R) and non-reducing (NR) conditions and stained using Coomassie blue.

For technical support and original validation data for this product please contact

T: 027-87531629

E: Proteintech-CN@ptglab.com

W: ptgcn.com

This product is exclusively available under Proteintech Group brand and is not available to purchase from any other manufacturer.