

For Research Use Only

# Recombinant Human ECM1 protein (His Tag)



Catalog Number: Eg0533

## Basic Information

**ED50:**  
/

**GeneID:**  
1893

**Species:**  
Human

**Accession:**  
AAH23505

**Purity:**  
>95 %, SDS-PAGE

## Technical Specifications

**Purity:**  
>95 %, SDS-PAGE

**Endotoxin Level:**  
<1.0 EU/  $\mu$ g protein, LAL method

**Source:**  
HEK293-derived Human ECM1 protein Ala20-Glu540 (Accession# AAH23505) with a His tag at the C-terminus.

**Predicted Molecular Mass:**  
63 kDa

**SDS-PAGE:**  
68-90 kDa, reducing (R) conditions

**Formulation:**  
Lyophilized from sterile PBS, pH 7.4. Normally 5% trehalose and 5% mannitol are added as protectants before lyophilization.

## Biological Activity

Not tested

## Storage and Shipping

**Storage:**  
It is recommended that the protein be aliquoted for optimal storage. Avoid repeated freeze-thaw cycles.

- Until expiry date, -20°C to -80°C as lyophilized proteins.
- 3 months, -20°C to -80°C under sterile conditions after reconstitution.

**Shipping:**  
The product is shipped at ambient temperature. Upon receipt, store it immediately at the recommended temperature.

## Reconstitution

Briefly centrifuge the tube before opening. Reconstitute at 0.1-0.5 mg/mL in sterile water.

## Background

ECM1 (extracellular matrix protein 1), also known as URBWD. It is located in secreted, extracellular space, and extracellular matrix, which is mainly expressed in esophagus and gall bladder. The gene encodes a soluble protein that is involved in endochondral bone formation, angiogenesis, and tumor biology. It also interacts with a variety of extracellular and structural proteins, contributing to the maintenance of skin integrity and homeostasis. Mutations in this gene are associated with lipoid proteinosis disorder (also known as hyalinosi cutis et mucosae or Urbach-Wiethe disease) that is characterized by generalized thickening of skin, mucosae and certain viscera. The calculated molecular weight of ECM1 is 60 kDa, and this antibody can recognize the 63 kDa isoform of target, moreover, this protein may have glycosylation modification.

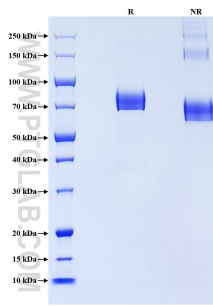
## References

1. Chen H. et al. (2010). *Med Oncol.* 1:5318-25.
2. López-Marure R. et al. (2011). *Eur J Pharmacol.* 660(2-3):268-74.
3. Lee KM. et al. (2015). *Oncogene.* 34(50):6055-65.

## Synonyms

ECM1, extracellular matrix protein 1, Secretory comp

## Selected Validation Data



Purity of Recombinant Human ECM1 was determined by SDS-PAGE. The protein was resolved in an SDS-PAGE in reducing (R) and non-reducing (NR) conditions and stained using Coomassie blue.

For technical support and original validation data for this product please contact

T: 027-87531629

E: [Proteintech-CN@ptglab.com](mailto:Proteintech-CN@ptglab.com)

W: [ptgcn.com](http://ptgcn.com)

This product is exclusively available under Proteintech Group brand and is not available to purchase from any other manufacturer.