

For Research Use Only

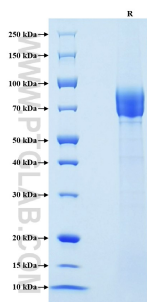
# Recombinant Mouse E-Selectin/CD62E protein (His Tag)



Catalog Number: Eg0610

Basic Information	Species: Mouse	Purity: >90 %, SDS-PAGE	Tag: His Tag
Technical Specifications	<p><b>Purity:</b> &gt;90 %, SDS-PAGE</p> <p><b>Endotoxin Level:</b> &lt;0.1 EU/ <math>\mu</math>g protein, LAL method</p> <p><b>Source:</b> HEK293-derived Mouse E-Selectin protein Trp22-Pro557 (Accession# Q00690) with a His tag at the C-terminus.</p> <p><b>GeneID:</b> 20339</p> <p><b>Accession:</b> Q00690</p> <p><b>Predicted Molecular Mass:</b> 59.6 kDa</p> <p><b>SDS-PAGE:</b> 65-90 kDa, reducing (R) conditions</p> <p><b>Formulation:</b> Lyophilized from 0.22 <math>\mu</math>m filtered solution in PBS, pH 7.4. Normally 5% trehalose and 5% mannitol are added as protectants before lyophilization.</p>		
Biological Activity	Not tested		
Storage and Shipping	<p><b>Storage:</b> It is recommended that the protein be aliquoted for optimal storage. Avoid repeated freeze-thaw cycles.</p> <ul style="list-style-type: none"><li>• Until expiry date, -20°C to -80°C as lyophilized proteins.</li><li>• 3 months, -20°C to -80°C under sterile conditions after reconstitution.</li></ul> <p><b>Shipping:</b> The product is shipped at ambient temperature. Upon receipt, store it immediately at the recommended temperature.</p>		
Reconstitution	Briefly centrifuge the tube before opening. Reconstitute at 0.1-0.5 mg/mL in sterile water.		
Background	<p>E-selectin, also known as ELAM-1 or CD62E, is a member of the selectin family of adhesion molecules that also include L-selectin and P-selectin. E-selectin is an inducible endothelial cell surface molecule. Its expression on endothelial cells is transcriptionally upregulated by various proinflammatory substances such as IL-1, TNF <math>\alpha</math> and lipopolysaccharide (LPS). Besides, it can be secreted by endothelial cells, and can be detected in a soluble form (sE-selectin) in serum. During inflammation, E-selectin plays an important part in recruiting leukocytes to the site of injury.</p>		
References	<ol style="list-style-type: none"><li>1. M P Bevilacqua, et al. (1987) Proc Natl Acad Sci U S A. 84(24):9238-42.</li><li>2. R Pigott, et al. (1992) Biochem Biophys Res Commun. 187(2):584-9.</li><li>3. E J Kunkel, et al. (1996) Circ Res. 79(6):1196-204.</li></ol>		
Synonyms	CD62E, E-selectin, E selectin, Elam, Sele		

## Selected Validation Data



Purity of Recombinant Mouse E-Selectin was determined by SDS-PAGE. The protein was resolved in an SDS-PAGE in reducing (R) conditions and stained using Coomassie blue.

For technical support and original validation data for this product please contact

T: 027-87531629

E: [Proteintech-CN@ptglab.com](mailto:Proteintech-CN@ptglab.com)

W: [ptgcn.com](http://ptgcn.com)

This product is exclusively available under Proteintech Group brand and is not available to purchase from any other manufacturer.