

Recombinant Human EpCAM/CD326 protein (His Tag)

Catalog Number: Eg1370

Basic Information	Species:	Purity:	Tag:
	Human	>90 %, SDS-PAGE	His Tag

Technical Specifications

Purity:
>90 %, SDS-PAGE

Endotoxin Level:
<0.1 EU/ µg protein, LAL method

Source:
HEK293-derived Human EpCAM protein Gln24-Lys265 (Accession# P16422) with a His tag at the C-terminus.

GeneID:
4072

Accession:
P16422

Predicted Molecular Mass:
28.5 kDa

SDS-PAGE:
30-37 kDa, reducing (R) conditions

Formulation:
Lyophilized from 0.22 µm filtered solution in PBS, pH 7.4. Normally 5% trehalose and 5% mannitol are added as protectants before lyophilization.

Biological Activity

Not tested

Storage and Shipping

Storage:
It is recommended that the protein be aliquoted for optimal storage. Avoid repeated freeze-thaw cycles.

- Until expiry date, -20°C to -80°C as lyophilized proteins.
- 3 months, -20°C to -80°C under sterile conditions after reconstitution.

Shipping:
The product is shipped at ambient temperature. Upon receipt, store it immediately at the recommended temperature.

Reconstitution

Briefly centrifuge the tube before opening. Reconstitute at 0.1-0.5 mg/mL in sterile water.

Background

Epithelial cell adhesion molecule (EpCAM, CD326) is a type I transmembrane glycoprotein that functions as a homophilic, epithelial-specific intercellular cell-adhesion molecule. In addition to cell adhesion, EpCAM is also involved in cellular signaling, cell migration, proliferation, and differentiation. EpCAM is highly expressed on most carcinomas and therefore of potential use as a diagnostic and prognostic marker for a variety of carcinomas, and has become a therapeutic target. EpCAM may occur in distinct forms due to glycosylation.

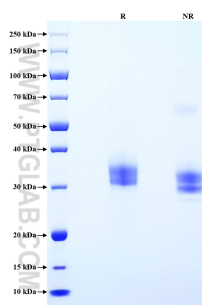
References

1. Christof Pauli, et al. (2003) Cancer Lett. 193(1):25-32.
2. Graham Carpenter, et al. (2009) Cancer Cell. 15(3):165-6.
3. Bernardina T F van der Gun, et al. (2010) Carcinogenesis. 31(11):1913-21.
4. Carlo Patriarca, et al. (2012) Cancer Treat Rev. 38(1):68-75.
5. Sannia Imrich, et al. (2012) Cell Adh Migr. 6(1):30-8.

Synonyms

EPCAM, Adenocarcinoma-associated antigen, CD326, Cell surface glycoprotein Trop-1, CO 17A

Selected Validation Data



Purity of Recombinant Human EpCAM was determined by SDS-PAGE. The protein was resolved in an SDS-PAGE in reducing (R) and non-reducing (NR) conditions and stained using Coomassie blue.

For technical support and original validation data for this product please contact

T: 027-87531629

E: Proteintech-CN@ptglab.com

W: ptgcn.com

This product is exclusively available under Proteintech Group brand and is not available to purchase from any other manufacturer.