

For Research Use Only

Recombinant Human LYVE-1 protein (rFc Tag)



Catalog Number: Eg1615

Basic Information

Species:
Human

Purity:
>85 %, SDS-PAGE

Tag:
rFc Tag

Technical Specifications

Purity:

>85 %, SDS-PAGE

Endotoxin Level:

<0.1 EU/ μ g protein, LAL method

Source:

HEK293-derived Human LYVE-1 protein Leu20-Thr238 (Accession# Q9Y5Y7) with a rabbit IgG Fc tag at the C-terminus.

GeneID:

10894

Accession:

Q9Y5Y7

Predicted Molecular Mass:

49.9 kDa

SDS-PAGE:

70-90 kDa, reducing (R) conditions

Formulation:

Lyophilized from 0.22 μ m filtered solution in PBS, pH 7.4. Normally 5% trehalose and 5% mannitol are added as protectants before lyophilization.

Biological Activity

Not tested

Storage and Shipping

Storage:

It is recommended that the protein be aliquoted for optimal storage. Avoid repeated freeze-thaw cycles.

- Until expiry date, -20°C to -80°C as lyophilized proteins.
- 3 months, -20°C to -80°C under sterile conditions after reconstitution.

Shipping:

The product is shipped at ambient temperature. Upon receipt, store it immediately at the recommended temperature.

Reconstitution

Briefly centrifuge the tube before opening. Reconstitute at 0.1-0.5 mg/mL in sterile water.

Background

The lymphatic vessel endothelial hyaluronan receptor-1 (LYVE1) gene is located on chromosome 11p15.4 and comprises six exons. LYVE1 is notably expressed on lymphatic endothelial cells (LEC) and selected macrophages, but not on microglia. In the periphery, macrophage populations lining the blood vessels or nerve bundles have been characterized as LYVE1^{hi} and LYVE1^{lo}, respectively.

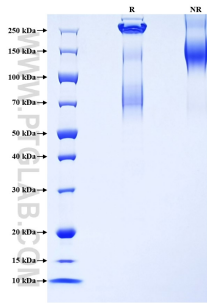
References

1. Siret C, et al. (2022). Nat Commun. 13(1):7366.
2. Feng Z, et al. (2023). Dis Markers. 6978234.

Synonyms

LYVE1, Cell surface retention sequence-binding protein 1, CRSBP 1, CRSBP1, CRSBP-1

Selected Validation Data



Purity of Recombinant Human LYVE-1 was determined by SDS-PAGE. The protein was resolved in an SDS-PAGE in reducing (R) and non-reducing (NR) conditions and stained using Coomassie blue.

For technical support and original validation data for this product please contact

T: 027-87531629

E: Proteintech-CN@ptglab.com

W: ptgcn.com

This product is exclusively available under Proteintech Group brand and is not available to purchase from any other manufacturer.