

For Research Use Only

Recombinant Human Fc Epsilon RI Alpha protein (rFc Tag)



Catalog Number: Eg2022

Basic Information

Species:
Human

Purity:
>90 %, SDS-PAGE

Tag:
rFc Tag

Technical Specifications

Purity:

>90 %, SDS-PAGE

Endotoxin Level:

<0.1 EU/ μ g protein, LAL method

Source:

HEK293-derived Human Fc Epsilon RI Alpha protein Val26-Gln205 (Accession# P12319) with a rabbit IgG Fc tag at the C-terminus.

GeneID:

2205

Accession:

P12319

Predicted Molecular Mass:

50.3 kDa

SDS-PAGE:

52-80 kDa, reducing (R) conditions

Formulation:

Lyophilized from 0.22 μ m filtered solution in PBS, pH 7.4. Normally 5% trehalose and 5% mannitol are added as protectants before lyophilization.

Biological Activity

Not tested

Storage and Shipping

Storage:

It is recommended that the protein be aliquoted for optimal storage. Avoid repeated freeze-thaw cycles.

- Until expiry date, -20°C to -80°C as lyophilized proteins.
- 3 months, -20°C to -80°C under sterile conditions after reconstitution.

Shipping:

The product is shipped at ambient temperature. Upon receipt, store it immediately at the recommended temperature.

Reconstitution

Briefly centrifuge the tube before opening. Reconstitute at 0.1-0.5 mg/mL in sterile water.

Background

Fc fragment of IgE, high affinity I, receptor for, alpha polypeptide, also known as high affinity immunoglobulin epsilon receptor subunit alpha, FCER1A and FCE1A, is a single-pass type I membrane protein which contains 2 immunoglobulin-like domains. FCER1A is a subunit of the IgE receptor, which is composed of one glycosylated alpha (FCER1A), one beta (FCER1B), and two gamma (FCER1G) subunits. The high affinity IgE receptor plays a central role in allergic disease, coupling allergen and mast cells to initiate the inflammatory and immediate hypersensitivity responses that are characteristic of disorders such as hay fever and asthma.

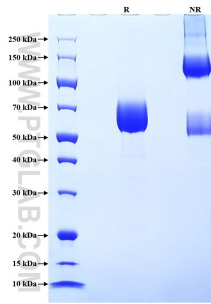
References

1. S S Saini, et al. (2001) J Allergy Clin Immunol. May; 107(5):832-41.
2. Natalija Novak, et al. (2003) J Clin Invest. Apr; 111(7):1047-56.
3. M C Seminario, et al. (1999) J Immunol. Jun 1; 162(11):6893-900.

Synonyms

FCER1A, Fc epsilon RI alpha, FCE1A, Fc-epsilon RI-alpha, FCERI

Selected Validation Data



Purity of Recombinant Human Fc Epsilon RI Alpha was determined by SDS-PAGE. The protein was resolved in an SDS-PAGE in reducing (R) and non-reducing (NR) conditions and stained using Coomassie blue.

For technical support and original validation data for this product please contact

T: 027-87531629

E: Proteintech-CN@ptglab.com

W: ptgcn.com

This product is exclusively available under Proteintech Group brand and is not available to purchase from any other manufacturer.