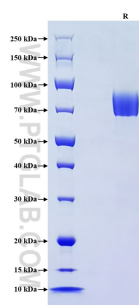


Recombinant Human L-selectin/CD62L protein (rFc Tag)

Catalog Number: Eg3006

Basic Information	Species: Human	Purity: >90 %, SDS-PAGE	Tag: rFc Tag
Technical Specifications	<p>Purity: >90 %, SDS-PAGE</p> <p>Endotoxin Level: <0.1 EU/ µg protein, LAL method</p> <p>Source: HEK293-derived Human L-selectin protein Trp39-Asn332 (Accession# P14151-1) with a rabbit IgG Fc tag at the C-terminus.</p> <p>GeneID: 6402</p> <p>Accession: P14151-1</p> <p>Predicted Molecular Mass: 59.1 kDa</p> <p>SDS-PAGE: 65-90 kDa, reducing (R) conditions</p> <p>Formulation: Lyophilized from 0.22 µm filtered solution in PBS, pH 7.4. Normally 5% trehalose and 5% mannitol are added as protectants before lyophilization.</p>		
Biological Activity	Not tested		
Storage and Shipping	<p>Storage: It is recommended that the protein be aliquoted for optimal storage. Avoid repeated freeze-thaw cycles.</p> <ul style="list-style-type: none"> • Until expiry date, -20°C to -80°C as lyophilized proteins. • 3 months, -20°C to -80°C under sterile conditions after reconstitution. <p>Shipping: The product is shipped at ambient temperature. Upon receipt, store it immediately at the recommended temperature.</p>		
Reconstitution	Briefly centrifuge the tube before opening. Reconstitute at 0.1-0.5 mg/mL in sterile water.		
Background	<p>CD62L, also known as L-selectin or SELL, is a member of the selectin family of adhesion molecules that also include CD62E (E-selectin) and CD62P (P-selectin). CD62L is a highly glycosylated protein of 95-105 kDa on neutrophils and 74 kDa on lymphocytes. CD62L is expressed on the surface of most leukocytes, including lymphocytes, neutrophils, monocytes, eosinophils, hematopoietic progenitor cells, and immature thymocytes. It mediates the binding of lymphocytes to high endothelial venules (HEV) of peripheral lymph nodes through interactions with a constitutively expressed ligand, and is also involved in lymphocyte, neutrophil, and monocyte attachment to endothelium at sites of inflammation.</p>		
References	<ol style="list-style-type: none"> 1.Bowen BR. et al. (1989) J Cell Biol. 109(1):421-427. 2.Tedder TF. et al. (1989) J Exp Med. 170(1):123-133. 3.Griffin JD. et al. (1990) J Immunol. 145(2):576-584. 4.Tedder TF. et al. (1990) Eur J Immunol. 20(6):1351-1355. 5.Tedder TF. et al. (1990) J Immunol. 144(2):532-540. 6.Schleiffenbaum B. et al. (1992) J Cell Biol. 119(1):229-238. 		
Synonyms	CD62L, L-selectin, CD62 antigen-like family member L, gp90 MEL, gp90-MEL		

Selected Validation Data



Purity of Recombinant Human L-selectin was determined by SDS-PAGE. The protein was resolved in an SDS-PAGE in reducing (R) conditions and stained using Coomassie blue.

For technical support and original validation data for this product please contact

T: 027-87531629

E: Proteintech-CN@ptglab.com

W: ptgcn.com

This product is exclusively available under Proteintech Group brand and is not available to purchase from any other manufacturer.