

For Research Use Only

# Recombinant Mouse IL-6 protein (Myc Tag, His Tag)



Catalog Number: Eg31367

## Basic Information

**Species:**  
Mouse

**EC50:**  
46-194 ng/mL

**Purity:**  
>95 %, SDS-PAGE

**Tag:**  
Myc Tag, His Tag

## Technical Specifications

**Purity:**  
>95 %, SDS-PAGE

**Endotoxin Level:**  
<0.1 EU/  $\mu$ g protein, LAL method

**Source:**  
HEK293-derived Mouse IL-6 protein Phe25-Thr211 (Accession# P08505) with a Myc tag and a His tag at the C-terminus.

**GeneID:**  
16193

**Accession:**  
P08505

**Predicted Molecular Mass:**  
24.2 kDa

**SDS-PAGE:**  
26-40 kDa, reducing (R) conditions

**Formulation:**  
Lyophilized from 0.22  $\mu$ m filtered solution in PBS, pH 7.4. Normally 5% trehalose and 5% mannitol are added as protectants before lyophilization.

## Biological Activity

Immobilized Mouse IL-6R alpha (His tag) at 1  $\mu$ g/mL (100  $\mu$ L/well) can bind Mouse IL-6 (Myc tag, His tag) with a linear range of 46-194 ng/mL.

## Storage and Shipping

### Storage:

It is recommended that the protein be aliquoted for optimal storage. Avoid repeated freeze-thaw cycles.

- Until expiry date, -20°C to -80°C as lyophilized proteins.
- 3 months, -20°C to -80°C under sterile conditions after reconstitution.

### Shipping:

The product is shipped at ambient temperature. Upon receipt, store it immediately at the recommended temperature.

## Reconstitution

Briefly centrifuge the tube before opening. Reconstitute at 0.1-0.5 mg/mL in sterile water.

## Background

Interleukin-6 (IL-6) is an interleukin that acts as both a pro-inflammatory and anti-inflammatory cytokine. IL-6 protein is secreted by a variety of cell types including T cells and macrophages as phosphorylated and variably glycosylated molecule. IL-6 plays an essential role in the final differentiation of B-cells into Ig-secreting cells involved in lymphocyte and monocyte differentiation. It induces myeloma and plasmacytoma growth and induces nerve cells differentiation. IL-6 is also considered a myokine, a cytokine produced from muscle, and is elevated in response to muscle contraction. IL-6 has been shown to interact with interleukin-6 receptor and glycoprotein 130. Additionally, IL-6 is involved in hematopoiesis, bone metabolism, and cancer progression, and has been defined an essential role in directing transition from innate to acquired immunity.

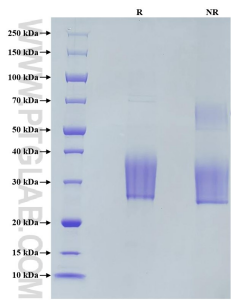
## References

1. Scheller J. et al. (1988). Behring Inst Mitt. Behring Inst Mitt. (83):40-7.
2. Heinrich PC. et al. (2003). Biochem J. 374: 1-20.
3. Rose-John S. et al. (2007). Expert Opin Ther Targets. 11: 613-24.
4. Ming JE. et al. (1989). J Mol Cell Immunol. 4: 203-11.
5. Febbraio MA. et al. (2005). Exerc Sport Sci Rev. 33:114-9.
6. J Appl Physiol. et al. (2005). J Appl Physiol. 98:1154-62.

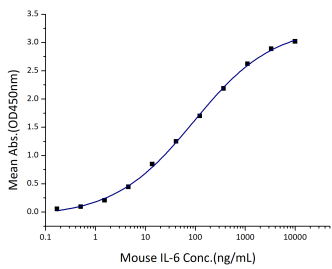
## Synonyms

IL6, IL-6, Il 6, interleukin 6, interleukin-6

Selected Validation Data



Purity of Recombinant Mouse IL-6 was determined by SDS-PAGE. The protein was resolved in an SDS-PAGE in reducing (R) and non-reducing (NR) conditions and stained using Coomassie blue.



Immobilized Mouse IL-6R alpha (His tag) at 1  $\mu$ g/mL (100  $\mu$  L/well) can bind Mouse IL-6 (Myc tag, His tag) with a linear range of 46-194 ng/mL