

For Research Use Only

Recombinant Human Complement factor H protein (rFc Tag)



Catalog Number: Eg3753

Basic Information

ED50:
/

Species:
Human

Purity:
>90 %, SDS-PAGE

GeneID:
3075

Accession:
P08603-1

Technical Specifications

Purity:

>90 %, SDS-PAGE

Endotoxin Level:

<1.0 EU/ μ g protein, LAL method

Source:

HEK293-derived Human Complement factor H protein Ser860-Arg1231 (Accession# P08603-1) with a rabbit IgG Fc tag at the C-terminus.

Predicted Molecular Mass:

71.0 kDa

SDS-PAGE:

75-95 kDa, reducing (R) condition

Formulation:

Lyophilized from sterile PBS, pH 7.4. Normally 5% trehalose and 5% mannitol are added as protectants before lyophilization.

Biological Activity

Not tested

Storage and Shipping

Storage:

It is recommended that the protein be aliquoted for optimal storage. Avoid repeated freeze-thaw cycles.

- Until expiry date, -20°C to -80°C as lyophilized proteins.
- 3 months, -20°C to -80°C under sterile conditions after reconstitution.

Shipping:

The product is shipped at ambient temperature. Upon receipt, store it immediately at the recommended temperature.

Reconstitution

Briefly centrifuge the tube before opening. Reconstitute at 0.1-0.5 mg/mL in sterile water.

Background

Complement factor H (CFH) is an abundant plasma glycoprotein that regulates the function of the alternative complement pathway in the fluid phase and on cellular surfaces (PMID: 2963625). Factor H binds to C3b, accelerates the decay of the alternative pathway C3-convertase (C3bBb), and acts as a cofactor for the factor I-mediated proteolytic inactivation of C3b (PMID: 15163532). It plays a critical role in the homeostasis of the complement system in plasma and in the protection of bystander host cells and tissues from damage by complement activation. Abnormalities in factor H have been associated with renal disease (PMID: 18190458).

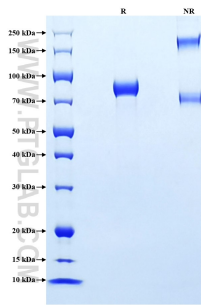
References

- 1.Ripoche, J. et al.(1988) Biochem J. 249(2):593-602.
- 2.Esparza-Gordillo, J. et al.(2004) Mol immunol. 41(4):355-67.
- 3.Pickering, MC. et al.(2008) Clin exp immunol. 151(2):210-30.

Synonyms

CFH, Complement factor H, ARMD4, ARMS1, Factor H

Selected Validation Data



Purity of Recombinant Human Complement factor H was determined by SDS-PAGE. The protein was resolved in an SDS-PAGE in reducing (R) and non-reducing (NR) conditions and stained using Coomassie blue.

For technical support and original validation data for this product please contact

T: 027-87531629

E: Proteintech-CN@ptglab.com

W: ptgcn.com

This product is exclusively available under Proteintech Group brand and is not available to purchase from any other manufacturer.