

For Research Use Only

# FITC Anti-Human CD19 (SJ25C1)

Catalog Number: FITC-65145



## Basic Information

<b>Catalog Number:</b> FITC-65145	<b>GenBank Accession Number:</b> BC006338	<b>Purification Method:</b> Affinity purification
<b>Size:</b> 100tests, 5 µl(0.125µg)/test	<b>GeneID (NCBI):</b> 930	<b>CloneNo.:</b> SJ25C1
<b>Source:</b> Mouse	<b>ENSEMBL Gene ID:</b> ENSG00000177455	<b>Excitation/Emission maxima wavelengths:</b> 494 nm / 520 nm
<b>Isotype:</b> IgG1	<b>UNIPROT ID:</b> P15391	
	<b>Full Name:</b> CD19 molecule	
	<b>Calculated MW:</b> 556 aa, 61 kDa	

## Applications

**Tested Applications:**  
FC

**Species Specificity:**  
Human

## Background Information

CD19 is a 95 kDa type I transmembrane glycoprotein belonging to the immunoglobulin superfamily (PMID: 2472450). It is expressed by B cells and follicular dendritic cells. CD19 is up-regulated at the step of B-lineage commitment during the differentiation of the hematopoietic stem cell, it remains on during subsequent stages of differentiation until finally down-regulated during terminal differentiation into plasma cells (PMID: 8528044). CD19 is involved in B cell development, activation and differentiation. It is the dominant component for the signaling complex on B cells that includes CD21 (CR2), CD81 (TAPA-1) and CD225 and acts as a critical co-receptor for BCR signal transduction (PMID: 23210908).

## Storage

**Storage:**  
Store at 2-8°C. Avoid exposure to light.

**Storage Buffer:**  
Phosphate based buffer with 0.09% sodium azide and 0.1% gelatin, pH 7.2.

For technical support and original validation data for this product please contact:

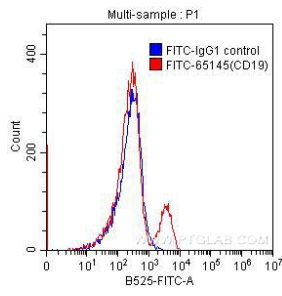
T: 4006900926

E: [Proteintech-CN@ptglab.com](mailto:Proteintech-CN@ptglab.com)

W: [ptgcn.com](http://ptgcn.com)

**This product is exclusively available under Proteintech Group brand and is not available to purchase from any other manufacturer.**

## Selected Validation Data



$1 \times 10^6$  human peripheral blood lymphocytes were surface stained with 0.125  $\mu$ g FITC-anti-human CD19 (FITC-65145, clone SJ25C1) (red) or 0.125  $\mu$ g FITC-mouse IgG1 isotype control (blue). Cells were not fixed.