

For Research Use Only

# FITC Anti-Human CD206 (15-2)

Catalog Number: FITC-65155 **4 Publications**



## Basic Information

**Catalog Number:**

FITC-65155

**Size:**

100 tests, 4 µl/test

**Source:**

Mouse

**Isotype:**

IgG1, kappa

**GenBank Accession Number:**

NM\_002438

**GeneID (NCBI):**

4360

**UNIPROT ID:**

P22897

**Full Name:**

mannose receptor, C type 1

**Calculated MW:**

166 kDa

**Purification Method:**

The purified antibody is conjugated with fluorescein isothiocyanate (FITC) under optimum conditions. The conjugate is purified by size-exclusion chromatography.

**CloneNo.:**

15-2

**Excitation/Emission maxima wavelengths:**

494 nm / 520 nm

## Applications

**Tested Applications:**

FC

**Cited Applications:**

FC

**Species Specificity:**

Human

**Cited Species:**

human

## Background Information

CD206, also named as MMR, CLEC13D and MRC1, is a type I membrane receptor that mediates the endocytosis of glycoproteins by macrophages. CD206 has been shown to bind high-mannose structures on the surface of potentially pathogenic viruses, bacteria, and fungi so that they can be neutralized by phagocytic engulfment. CD206 is a 170 kDa transmembrane protein which contains 5 domains: an amino-terminal cysteine-rich region, a fibronectin type II repeat, a series of eight tandem lectin-like carbohydrate recognition domains (responsible for the recognition of mannose and fucose), a transmembrane domain, and an intracellular carboxy-terminal tail. It is expressed on most tissue macrophages, in vitro derived dendritic cells, lymphatic and sinusoidal endothelia.

## Notable Publications

Author	Pubmed ID	Journal	Application
Qi Wang	34214019	Pharm Biol	FC
Qi Li	35027915	Front Immunol	FC
Ling Zhou	37748566	Biochim Biophys Acta Mol Basis Dis	FC

## Storage

**Storage:**

Store at 2-8°C. Avoid exposure to light. Stable for one year after shipment.

**Storage Buffer:**

PBS with 0.1% sodium azide.

For technical support and original validation data for this product please contact:

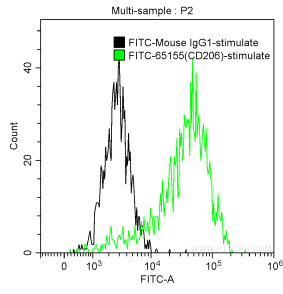
T: 4006900926

E: Proteintech-CN@ptglab.com

W: ptgcn.com

**This product is exclusively available under Proteintech Group brand and is not available to purchase from any other manufacturer.**

## Selected Validation Data



Human monocyte-derived dendritic cells (monocytes stimulated with GM-CSF and IL-4) were surface stained with 4  $\mu$ l FITC Anti-Human CD206 (FITC-65155, Clone: 15-2) (green) or FITC-Mouse IgG1 isotype control (black). Cells were not fixed.