

For Research Use Only

# FITC Plus Anti-Human CD68 (KP1)

Catalog Number: FITC-65202



## Basic Information

<b>Catalog Number:</b> FITC-65202	<b>GenBank Accession Number:</b> BC015557	<b>Purification Method:</b> Protein G purification
<b>Size:</b> 100tests, 5 µ l/test	<b>GeneID (NCBI):</b> 968	<b>CloneNo.:</b> KP1
<b>Source:</b> Mouse	<b>UNIPROT ID:</b> P34810	<b>Excitation/Emission maxima wavelengths:</b> 495 nm / 524 nm
<b>Isotype:</b> IgG1, kappa	<b>Full Name:</b> CD68 molecule	
	<b>Calculated MW:</b> 37 kDa	

## Applications

**Tested Applications:**  
FC (Intra)

**Species Specificity:**  
Human

## Background Information

CD68 is a type I transmembrane glycoprotein that is highly expressed by human monocytes and tissue macrophages. It belongs to the lysosomal/endosomal-associated membrane glycoprotein (LAMP) family and primarily localizes to lysosomes and endosomes with a smaller fraction circulating to the cell surface. CD68 is also a member of the scavenger receptor family. It may play a role in phagocytic activities of tissue macrophages.

## Storage

**Storage:**  
Store at 2-8°C. Avoid exposure to light. Stable for one year after shipment.

**Storage Buffer:**  
PBS with 0.09% sodium azide and 0.5% BSA.

For technical support and original validation data for this product please contact:

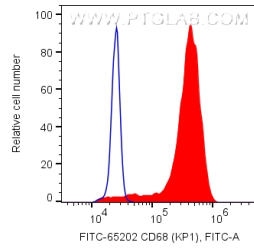
T: 4006900926

E: [Proteintech-CN@ptglab.com](mailto:Proteintech-CN@ptglab.com)

W: [ptgcn.com](http://ptgcn.com)

**This product is exclusively available under Proteintech Group brand and is not available to purchase from any other manufacturer.**

## Selected Validation Data



$1 \times 10^6$  human PBMCs were intracellularly stained with 5  $\mu$ l FITC Plus Anti-Human CD68 (FITC-65202, Clone: KP1) (red), or Mouse IgG1 Isotype Control (blue). Cells were fixed and permeabilized with Transcription Factor Staining Buffer Kit (PF00011). Monocytes were gated.