

For Research Use Only

FITC Plus Anti-Human LRP1 (5A6)

Catalog Number: FITC-65233



Basic Information

| | | |
|--------------------------------------|---|---|
| Catalog Number: FITC-65233 | GenBank Accession Number: BC045107 | Purification Method: Affinity purification |
| Size: 100tests, 5 µl/test | GeneID (NCBI): 4035 | CloneNo.: 5A6 |
| Source: Mouse | UNIPROT ID: Q07954 | Excitation/Emission maxima wavelengths: 495 nm / 524 nm |
| Isotype: IgG2b | Full Name: low density lipoprotein-related protein 1 (alpha-2-macroglobulin receptor) | |
| | Calculated MW: 505 kDa | |

Applications

Tested Applications:
FC

Species Specificity:
Human

Background Information

LRP1 (Prolow-density lipoprotein receptor-related protein 1), also known as A2MR, APOER and CD91, is a type I transmembrane protein that belongs to the LDLR family. LRP1 is synthesized as a transmembrane glycosylated precursor of 600 kDa, and is subsequently cleaved to generate a large 515-kDa N-terminal extracellular subunit and an 85-kDa C-terminal transmembrane subunit, which are noncovalently associated with one another (PMID: 2112085; 8546712). LRP1 is a multifunctional receptor involved in the clearance of a large number of diverse ligands and modulating various cellular processes. LRP1 is implicated in conditions such as atherosclerosis, cancer and neurodegenerative diseases (PMID: 28381441).

Storage

Storage:
Store at 2-8°C. Avoid exposure to light. Stable for one year after shipment.

Storage Buffer:
PBS with 0.09% sodium azide.

For technical support and original validation data for this product please contact:

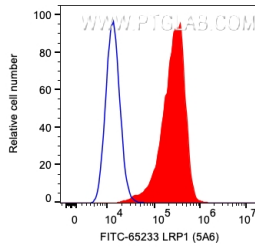
T: 4006900926

E: Proteintech-CN@ptglab.com

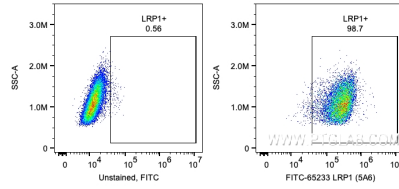
W: ptgcn.com

This product is exclusively available under Proteintech Group brand and is not available to purchase from any other manufacturer.

Selected Validation Data



1X10⁶ U-87 MG cells were surface stained with 5 ul FITC Plus Plus Anti-Human LRP1 (FITC-65233, Clone:5A6) or unstained. Cells were not fixed.



1X10⁶ U-87 MG cells were surface stained with 5 ul FITC Plus Plus Anti-Human LRP1 (FITC-65233, Clone:5A6) or unstained. Cells were not fixed.