

For Research Use Only

# FITC Plus Anti-Human CD3 (UCHT1) Mouse IgG1 Recombinant Antibody



Catalog Number: FITC-65536

## Basic Information

Catalog Number:

FITC-65536

Size:

100 tests, 5 µl/test

Source:

Mouse

Isotype:

IgG1

GenBank Accession Number:

BC049847

GeneID (NCBI):

916

ENSEMBL Gene ID:

ENSG00000198851

Full Name:

CD3e molecule, epsilon (CD3-TCR complex)

Calculated MW:

207 aa, 23 kDa

Purification Method:

Affinity purification

CloneNo.:

UCHT1

Excitation/Emission maxima wavelengths:

495 nm / 524 nm

## Applications

Tested Applications:

FC

Species Specificity:

Human

## Background Information

CD3 is a multimeric protein associated with the T-cell receptor (TCR) to form a complex involved in antigen recognition and signal transduction (PMID: 15885124). CD3 is composed of CD3  $\gamma$ ,  $\delta$ ,  $\epsilon$ , and  $\zeta$  chains (PMID: 1826255). It is expressed by thymocytes in a developmentally regulated manner, T cells, and some NK cells (PMID: 3289580). The TCR recognizes antigens bound to major histocompatibility complex (MHC) molecules. TCR-mediated peptide-MHC recognition is transmitted to the CD3 complex, leading to the intracellular signal transduction (PMID: 11985657).

## Storage

Storage:

Store at 2-8°C. Avoid exposure to light. Stable for one year after shipment.

Storage Buffer:

PBS with 0.09% sodium azide and 0.5% BSA.

For technical support and original validation data for this product please contact:

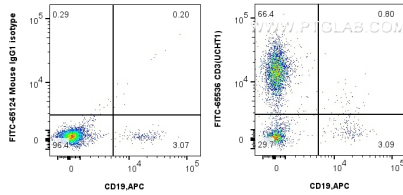
T: 4006900926

E: [Proteintech-CN@ptglab.com](mailto:Proteintech-CN@ptglab.com)

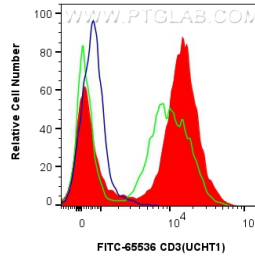
W: [ptgcn.com](http://ptgcn.com)

This product is exclusively available under Proteintech Group brand and is not available to purchase from any other manufacturer.

## Selected Validation Data



1x10<sup>6</sup> human PBMCs were surface stained with 5 ul FITC Plus Anti-Human CD3 Mouse Recombinant Antibody (FITC-65536, Clone: UCHT1) or FITC Plus Mouse IgG1 Isotype Control (MOPC-21) (FITC-65124, Clone: MOPC-21), and APC Anti-Human CD19 (HIB19) (APC-65110, Clone: HIB19). Cells were not fixed. Lymphocytes were gated.



1x10<sup>6</sup> human PBMCs were surface stained with 5 ul FITC Plus Anti-Human CD3 (FITC-65536, Clone:UCHT1)(red), and 5 ul FITC Plus Mouse IgG1 Isotype Control (MOPC-21) (FITC-65124, Clone: MOPC-21)(blue). Cells were not fixed. Overlap OEM FITC-65151 21009051(green)