

For Research Use Only

# FITC Plus Anti-Human CD16 (3G8) Mouse IgG1 Recombinant Antibody



Catalog Number: FITC-65539

## Basic Information

<b>Catalog Number:</b> FITC-65539	<b>GenBank Accession Number:</b> BC017865	<b>Purification Method:</b> Affinity purification
<b>Size:</b> 100tests, 5 µl/test	<b>GeneID (NCBI):</b> 2214	<b>CloneNo.:</b> 3G8
<b>Source:</b> Mouse	<b>ENSEMBL Gene ID:</b> ENSG00000203747	<b>Excitation/Emission maxima wavelengths:</b> 495 nm / 524 nm
<b>Isotype:</b> IgG1	<b>Full Name:</b> Fc fragment of IgG, low affinity IIIa, receptor (CD16a)	
	<b>Calculated MW:</b> 254 aa, 29 kDa	

## Applications

**Tested Applications:**  
FC

**Species Specificity:**  
Human

## Background Information

CD16 is a 50-70-kDa low affinity Fc receptor found on the surface of natural killer cells, neutrophil polymorphonuclear leukocytes, monocytes and macrophages. CD16 mediates antibody-dependent cellular cytotoxicity (ADCC) and other antibody-dependent responses, such as phagocytosis. CD16 has been identified as Fc receptors Fc $\gamma$  RIIIa (CD16a) and Fc $\gamma$  RIIIb (CD16b), encoded by two nearly identical genes, FCGR3A and FCGR3B.

## Storage

**Storage:**  
Store at 2-8°C. Avoid exposure to light. Stable for one year after shipment.

**Storage Buffer:**  
PBS with 0.09% sodium azide and 0.5% BSA.

For technical support and original validation data for this product please contact:

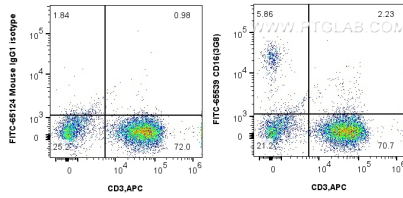
T: 4006900926

E: [Proteintech-CN@ptglab.com](mailto:Proteintech-CN@ptglab.com)

W: [ptgcn.com](http://ptgcn.com)

**This product is exclusively available under Proteintech Group brand and is not available to purchase from any other manufacturer.**

## Selected Validation Data



1x10<sup>6</sup> human PBMCs were surface stained with 5 ul FITC Plus Anti-Human CD16 Mouse Recombinant Antibody (FITC-65539, Clone: 3G8) or FITC Plus Mouse IgG1 Isotype Control (MOPC-21) (FITC-65124, Clone: MOPC-21), and 5 ul APC Anti-Human CD3 (OKT3) (APC-65133, Clone: OKT3). Cells were not fixed.