

For Research Use Only

FITC Plus Anti-Human CD21 (BU32) Mouse IgG2a Recombinant Antibody

Catalog Number: FITC-65591



Basic Information

Catalog Number:

FITC-65591

Size:

100 tests, 5 ul/test

Source:

Mouse

Isotype:

IgG2a

GenBank Accession Number:

BC136394

GeneID (NCBI):

1380

ENSEMBL Gene ID:

ENSG00000117322

Full Name:

complement component (3d/Epstein
Barr virus) receptor 2

Calculated MW:

1092 aa, 119 kDa

Purification Method:

Protein A purification

CloneNo.:

BU32

**Excitation/Emission maxima
wavelengths:**

495 nm / 524 nm

Applications

Tested Applications:

FC

Species Specificity:

human

Background Information

CD21, also known as complement receptor type 2 (CR2), complement C3d receptor, and Epstein-Barr virus receptor, is a transmembrane protein that contains a small cytoplasmic domain, a transmembrane region and an extracellular domain consisting of 15 tandem short consensus repeat sequences (PMID: 6230668; 2551147). It is expressed on B cells, follicular dendritic cells, thymocytes and a subset of peripheral T cells (PMID: 26119182). CD21 binds complement fragments C3d, C3dg and iC3b and acts as a receptor for the Epstein-Barr virus (PMID: 7753047). On B cells, together with CD19 and CD81, CD21 forms a complex that functions as a co-receptor to the BCR (PMID: 7542009). It is involved in B cells activation and functions.

Storage

Storage:

Store at 2-8°C. Avoid exposure to light. Stable for one year after shipment.

Storage Buffer:

PBS with 0.09% sodium azide and 0.5% BSA.

For technical support and original validation data for this product please contact:

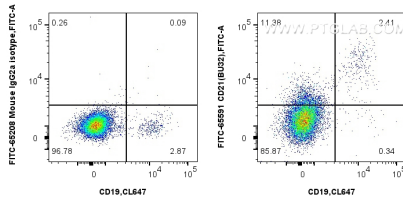
T: 4006900926

E: Proteintech-CN@ptglab.com

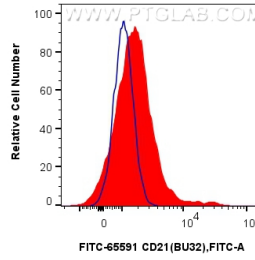
W: ptgcn.com

This product is exclusively available under Proteintech Group brand and is not available to purchase from any other manufacturer.

Selected Validation Data



1x10⁶ human PBMCs were surface stained with CoraLite® Plus 647 Anti-Human CD19 and 5 ul FITC Plus Anti-Human CD21 (BU32) Mouse IgG2a Recombinant Antibody (FITC-65591, Clone:BU32), or FITC Plus Mouse IgG2a Isotype Control (C1.18.4) (FITC-65208, Clone: C1.18.4). Cells were not fixed. Lymphocytes were gated.



1x10⁶ human PBMCs were surface stained with 5 ul FITC Plus Anti-Human CD21 (BU32) Mouse IgG2a Recombinant Antibody (FITC-65591, Clone: BU32) (red), or FITC Plus Mouse IgG2a Isotype Control (C1.18.4) (FITC-65208, Clone: C1.18.4)(blue). Cells were not fixed. Lymphocytes were gated.