

For Research Use Only

# FITC Plus Anti-Human IL-1RAP Rabbit Recombinant Antibody

Catalog Number: FITC-98073



## Basic Information

<b>Catalog Number:</b> FITC-98073	<b>GenBank Accession Number:</b> NM_002182.4	<b>Purification Method:</b> Protein A purification
<b>Concentration:</b> 100tests, 5 ul/test	<b>GeneID (NCBI):</b> 3556	<b>CloneNo.:</b> 240756A12
<b>Source:</b> Rabbit	<b>UNIPROT ID:</b> Q9NPH3-1	<b>Excitation/Emission maxima wavelengths:</b> 495 nm / 524 nm
<b>Isotype:</b> IgG	<b>Full Name:</b> interleukin 1 receptor accessory protein	
<b>Immunogen Catalog Number:</b> EG0827	<b>Calculated MW:</b> 65 kDa	

## Applications

**Tested Applications:**  
FC

**Species Specificity:**  
human

## Background Information

IL-1RAP (Interleukin-1 receptor accessory protein), also known as IL-1RAcP, IL-1R-3, or IL-1R3, is a member of the interleukin-1 receptor family. IL-1RAP is composed of an extracellular region containing three Ig-like C2 type domains, a transmembrane region, and a cytoplasmic region with a TIR (Toll-IL-1-receptor) domain. IL-1RAP functions as a co-receptor for IL-1, IL-33, IL-36. It plays an essential role in the signaling of the IL-1 family cytokines such as IL-1, IL-33, and IL-36, as well as tyrosine kinases FLT3 and c-Kit. IL-1RAP can also exist in a soluble form.

## Storage

**Storage:**  
Store at 2-8°C. Avoid exposure to light. Stable for one year after shipment.

**Storage Buffer:**  
PBS with 0.09% sodium azide and 0.5% BSA, pH7.3

For technical support and original validation data for this product please contact:

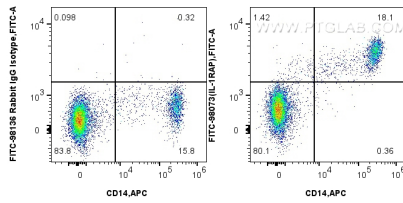
T: 4006900926

E: [Proteintech-CN@ptglab.com](mailto:Proteintech-CN@ptglab.com)

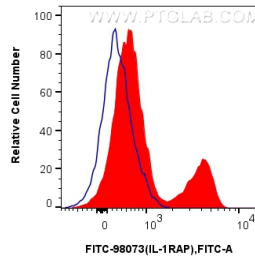
W: [ptgcn.com](http://ptgcn.com)

**This product is exclusively available under Proteintech Group brand and is not available to purchase from any other manufacturer.**

## Selected Validation Data



1x10<sup>6</sup> FC receptor blocked human PBMCs were surface stained with APC Anti-Human CD14, and 5 ul FITC Plus Anti-Human IL-1RAP Rabbit RecAb (FITC-98073, Clone: 240756A12) or FITC Plus Rabbit IgG Isotype Control RecAb (FITC-98136, Clone: 240953C9). Cells were not fixed.



1x10<sup>6</sup> FC receptor blocked human PBMCs were surface stained with 5 ul FITC Plus Anti-Human IL-1RAP Rabbit RecAb (FITC-98073, Clone: 240756A12) (red) or FITC Plus Rabbit IgG Isotype Control RecAb (FITC-98136, Clone: 240953C9) (blue). Cells were not fixed.