

For Research Use Only

FITC Plus Anti-Human IL-6 Rabbit Recombinant Antibody

Catalog Number: FITC-98087



Basic Information

Catalog Number: FITC-98087	GenBank Accession Number: BC015511	Purification Method: Protein A purification
Concentration: 100tests, 5 ul/test	GeneID (NCBI): 3569	CloneNo.: 240670D12
Source: Rabbit	ENSEMBL Gene ID: ENSG00000136244	Excitation/Emission maxima wavelengths: 495 nm / 524 nm
Isotype: IgG	UNIPROT ID: P05231	
	Full Name: interleukin 6 (interferon, beta 2)	
	Calculated MW: 212 aa, 24 kDa	

Applications

Tested Applications:
FC (Intra)

Species Specificity:
human

Background Information

Interleukin-6 (IL-6) is an interleukin that acts as both a pro-inflammatory and anti-inflammatory cytokine. IL-6 protein is secreted by a variety of cell types including T cells and macrophages as phosphorylated and variably glycosylated molecule. IL-6 plays an essential role in the final differentiation of B-cells into Ig-secreting cells involved in lymphocyte and monocyte differentiation. It induces myeloma and plasmacytoma growth and induces nerve cells differentiation Acts on B-cells, T-cells, hepatocytes, hematopoietic progenitor cells and cells of the CNS. IL-6 is also considered a myokine, a cytokine produced from muscle, and is elevated in response to muscle contraction. IL-6 has been shown to interact with interleukin-6 receptor and glycoprotein 130. Additionally, IL-6 is involved in hematopoiesis, bone metabolism, and cancer progression, and has been defined an essential role in directing transition from innate to acquired immunity.

Storage

Storage:
Store at 2-8°C. Avoid exposure to light. Stable for one year after shipment.

Storage Buffer:
PBS with 0.09% sodium azide and 0.5% BSA

For technical support and original validation data for this product please contact:

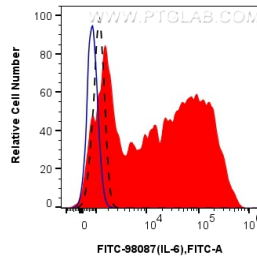
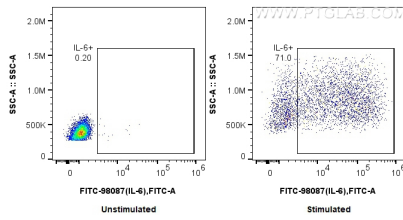
T: 4006900926

E: Proteintech-CN@ptglab.com

W: ptgcn.com

This product is exclusively available under Proteintech Group brand and is not available to purchase from any other manufacturer.

Selected Validation Data



1x10⁶ untreated or LPS and Brefeldin A treated human PBMCs were intracellularly stained with 5 ul FITC Plus Anti-Human IL-6 Rabbit RecAb (FITC-98087, Clone: 240670D12). Cells were fixed with 4% PFA and permeabilized with Flow Cytometry Perm Buffer (PF00011-C). Monocytes were gated.

1x10⁶ LPS and Brefeldin A treated human PBMCs were intracellularly stained with 5 ul FITC Plus Anti-Human IL-6 Rabbit RecAb (FITC-98087, Clone:240670D12) or FITC Plus Rabbit IgG Isotype Control RecAb (FITC-98136, Clone: 240953C9) (blue). 1x10⁶ untreated human PBMCs were intracellularly stained with 5 ul FITC Plus Anti-Human IL-6 Rabbit RecAb (FITC-98087, Clone:240670D12) (black, dashed). Cells were fixed with 4% PFA and permeabilized with Flow Cytometry Perm