

For Research Use Only

HRP-conjugated Lamin B1 Recombinant antibody

Catalog Number: HRP-80906

Featured Product



Basic Information

Catalog Number:

HRP-80906

Size:

1000 µg/ml

Source:

Rabbit

Isotype:

IgG

Immunogen Catalog Number:

AG3631

GenBank Accession Number:

BC012295

GeneID (NCBI):

4001

ENSEMBL Gene ID:

ENSG00000113368

UNIPROT ID:

P20700

Full Name:

lamin B1

Calculated MW:

66 kDa

Observed MW:

66-70 kDa

Purification Method:

Protein A purification

CloneNo.:

5H10

Recommended Dilutions:

WB 1:2000-1:16000

Applications

Tested Applications:

WB

Species Specificity:

human, mouse, rat

Positive Controls:

WB : HeLa cells, HepG2 cells

Background Information

Lamins are components of the nuclear lamina, a fibrous layer on the nucleoplasmic side of the inner nuclear membrane, which is thought to provide a framework for the nuclear envelope and may also interact with chromatin. The nuclear lamina consists of a two-dimensional matrix of proteins located next to the inner nuclear membrane. The lamin family of proteins make up the matrix and are highly conserved in evolution. During mitosis, the lamina matrix is reversibly disassembled as the lamin proteins are phosphorylated. Vertebrate lamins consist of two types, A and B. This gene encodes one of the two B type proteins, B1. Expression of uncleavable mutant lamin A or B caused significant delays in the onset of chromatin condensation and nuclear shrinkage during apoptosis (PMID:11953316). This protein is not suitable for samples where the nuclear envelope has been removed.

Storage

Storage:

Store at -20°C. Avoid exposure to light. Stable for one year after shipment.

Storage Buffer:

PBS with 50% Glycerol, 0.05% Proclin300, 0.5% BSA, pH 7.3.

Aliquoting is unnecessary for -20°C storage

For technical support and original validation data for this product please contact:

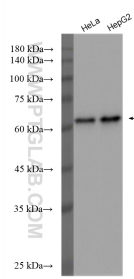
T: 4006900926

E: Proteintech-CN@ptglab.com

W: ptgcn.com

This product is exclusively available under Proteintech Group brand and is not available to purchase from any other manufacturer.

Selected Validation Data



Various lysates were subjected to SDS PAGE followed by western blot with HRP-80906 (Lamin B1 antibody) at dilution of 1:8000 incubated at room temperature for 1.5 hours.