

## HumanKine<sup>®</sup> M-CSF (Recombinant Human)



Animal Component-Free

Human cell expressed

Tag-Free

Endotoxin Free

### Product Description

Animal-free Recombinant Human M-CSF is expressed in human 293 cells and has an apparent molecular mass of 35 to 40 kDa due to glycosylation. M-CSF is a potent hematopoietic factor produced by a variety of cells including lymphocytes, monocytes, fibroblasts, endothelial cells, myoblasts, and osteoblasts. It is a key regulator of cellular proliferation, differentiation, and survival of blood monocytes, tissue macrophages, and their progenitor cells. This cytokine is produced in a human cell expression system with serum-free, chemically defined media.

#### Alternative Names

CSF 1, CSF1, Lanimostim, M CSF, MCSF, M-CSF

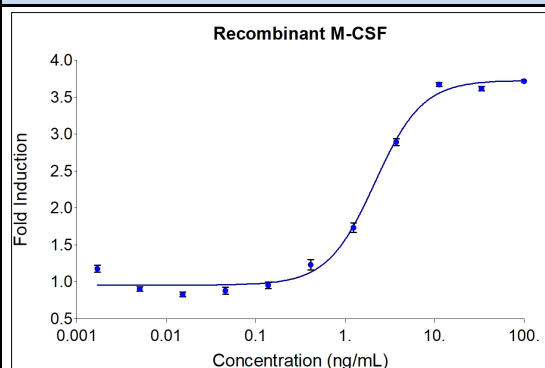
#### Source

Human Embryonic Kidney cells (HEK293). HEK293-derived M-CSF protein

### Specifications

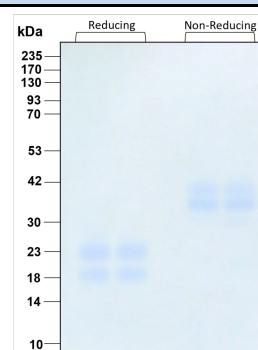
Test	Method	Specification
Activity	Dose-dependent stimulation of the proliferation of murine M-NFS-60 cells (Mouse myeloid leukemia indicator cell line)	0.7-4.0 ng/mL EC50
Molecular Mass	SDS-PAGE	35 and 40 kDa, homodimer, glycosylated
Purity	SDS-PAGE	>95%
Endotoxin	LAL	<1 EU/μg

### Activity Data



Recombinant human M-CSF (Cat no: HZ-1192) stimulates dose-dependent proliferation of the murine mouse myeloid leukemia (M-NFS-60) cell line. Cell number was quantitatively assessed by Prestoblu<sup>®</sup> Cell Viability Reagent. M-NFS-60 cells were treated with increasing concentrations of recombinant M-CSF for 48 hours. The EC50 range is 0.7-4.0 ng/mL.

### SDS-PAGE



Preparation	
Shipping Temperature	ambient temperature
Formulation	1x PBS, See Certificate of Analysis for details
Reconstitution	Briefly centrifuge the vial before opening. It is recommended to reconstitute the protein in sterile 1xPBS pH 7.4 containing 0.1% endotoxin-free recombinant human serum albumin (HSA).

Stability and Storage	Product Form	Temperature Conditions	Storage Time (From Date of Receipt)
	Lyophilized	-20°C to -80°C	Until Expiry Date
	Lyophilized	Room Temperature	2 weeks
	Reconstituted as per CofA	-20°C to -80°C	6 months
	Reconstituted as per CofA	4°C	1 week
Avoid repeated freeze-thaw cycles.			

[www.ptglab.com](http://www.ptglab.com)

Document #: FR-QA118-101 Rev 0  
Data Sheet Version #: 1

**Proteintech Group, Inc.**  
5500 Pearl Street, Suite 400 Rosemont, IL 60612  
t: 1-888-478-4522; f: 1-312-455-8408  
Email: [proteintech@ptglab.com](mailto:proteintech@ptglab.com)