

HumanKine® LIF (Recombinant Human)



Animal Component-Free

Human cell expressed

Tag-Free

Endotoxin Free

Product Description

Recombinant Human LIF is a pleiotropic factor produced by numerous cell types which includes myelomonocytic lineages, T cells, fibroblasts, melanoma, liver, and heart. LIF promotes long-term maintenance of embryonic stem cells by suppressing spontaneous differentiation. Other activities include the stimulation of acute phase protein synthesis by hepatocytes, stimulation of differentiation of cholinergic nerves, and suppression of adipogenesis by inhibiting the lipoprotein lipase in adipocytes. Mature human LIF (180 aa) shares 78%, 82%, 91%, 88 and 87% aa sequence identity with mouse, rat, canine, bovine, and porcine LIF, respectively. To reduce spontaneous differentiation, LIF is typically added to stem cell culture medium.

Alternative Names

CDF, D factor, DIA, Emfilermin, HILDA, Leukemia inhibitory factor, LIF, Melanoma derived LPL inhibitor, MLPLI

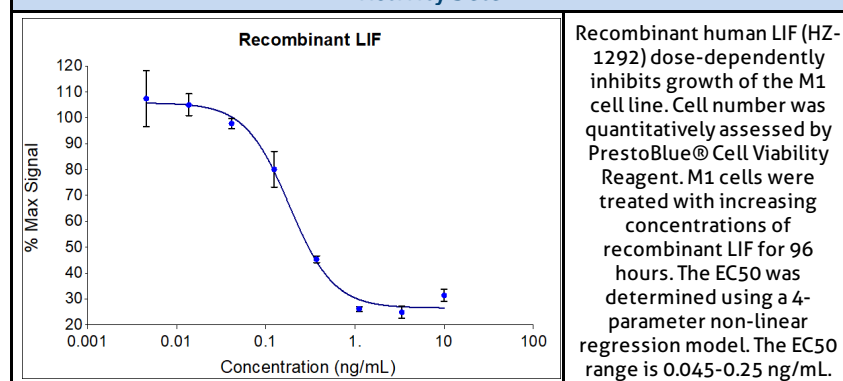
Source

Human Embryonic Kidney cells (HEK293). HEK293-derived LIF protein

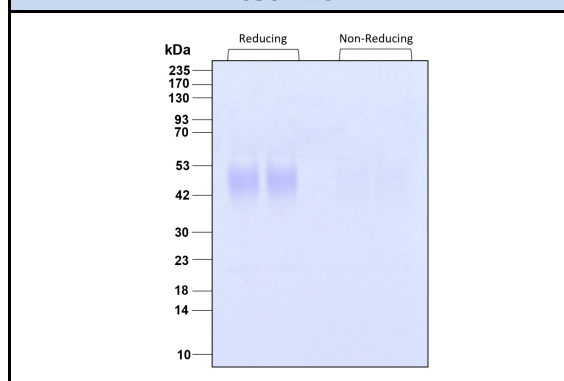
Specifications

Test	Method	Specification
Activity	Dose- dependent stimulation of the proliferation of human TF-1 cells (human erythroleukemic indicator cell line).	0.135-0.675 ng/mL EC50 TF-1 Cell assay. 0.045-0.25 ng/mL EC50 in M1 cell assay
Molecular Mass	SDS-PAGE	35-55 kDa reduced and non-reduced, glycosylated
Purity	SDS-PAGE	>95%
Endotoxin	LAL	<1 EU/ µg

Activity Data



SDS-PAGE



Preparation	
Shipping Temperature	ambient temperature
Formulation	1x PBS, See Certificate of Analysis for details
Reconstitution	Briefly centrifuge the vial before opening. It is recommended to reconstitute the protein in sterile 1x PBS pH 7.4 containing 0.1% endotoxin-free recombinant human serum albumin (HSA).

Stability and Storage	Product Form	Temperature Conditions	Storage Time (From Date of Receipt)
	Lyophilized	-20°C to -80°C	Until Expiry Date
	Lyophilized	Room Temperature	2 weeks
	Reconstituted as per CofA	-20°C to -80°C	6 months
	Reconstituted as per CofA	4°C	1 week
Avoid repeated freeze-thaw cycles.			

www.ptglab.com

Document #: FR-QA118-101 Rev 0
Data Sheet Version #: 1

Proteintech Group, Inc.
5500 Pearl Street, Suite 400 Rosemont, IL 60612
t: 1-888-478-4522; f: 1-312-455-8408
Email: proteintech@ptglab.com