

IHC*easy* VTN Ready-To-Use IHC Kit

Catalog Number: **KHC0122**

General Information

Sample type:
FFPE tissue
Cited sample type:
Reactivity:
Human
Cited Reactivity:

Assay type:
Immunohistochemistry
Primary antibody type:
Mouse Monoclonal
Secondary antibody type:
Polymer-HRP-Goat anti-Mouse

Kit Component

Component	Size	Concentration
Antigen Retrieval Buffer	100 mL	50×
Washing Buffer	100 mL ×2	20×
Blocking Buffer	5 mL	RTU
Primary Antibody	5 mL	RTU
Secondary Antibody	5 mL	RTU
Chromogen Component A	0.2 mL	RTU
Chromogen Component B	4 mL	RTU
Signal Enhancer	5 mL	RTU
Counter Staining Reagent	5 mL	RTU
Mounting Media	5 mL	RTU
Control Slide	1 slide (Optional)	FFPE
Datasheet	1 Copy	
Manual	1 Copy	

Storage Instructions

All the reagents are stored at 2-8°C. The kit is stable for 6 months from the date of receipt.

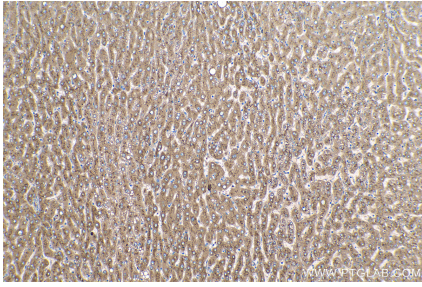
Background

Vitronectin is a glycoprotein present in blood and in the extracellular matrix. Vitronectin is a multifunctional glycoprotein that mediates cell-to-substrate adhesion, inhibits the cytolytic action of the terminal complement cascade in vitro and binds to several serine protease inhibitors of the serpin family.

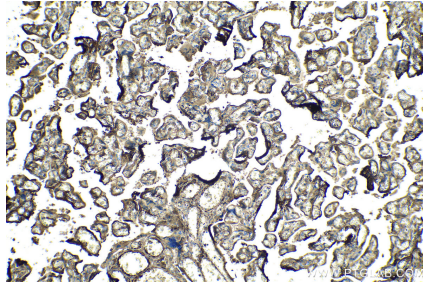
Synonyms

S protein, Serum spreading factor, V75, vitronectin, VN, VNT, VTN

Selected Validation Data



Immunohistochemical analysis of paraffin-embedded human liver tissue slide using KHC0122 (VTN IHC Kit).



Immunohistochemical analysis of paraffin-embedded human placenta tissue slide using KHC0122 (VTN IHC Kit).