

IHC*easy* YTHDF3 Ready-To-Use IHC Kit

Catalog Number: **KHC0159**

General Information

Sample type:
FFPE tissue
Cited sample type:
Reactivity:
Human, Mouse, Rat
Cited Reactivity:

Assay type:
Immunohistochemistry
Primary antibody type:
Rabbit Polyclonal
Secondary antibody type:
Polymer-HRP-Goat anti-Rabbit

Kit Component

Component	Size	Concentration
Antigen Retrieval Buffer	100 mL	50×
Washing Buffer	100 mL ×2	20×
Blocking Buffer	5 mL	RTU
Primary Antibody	5 mL	RTU
Secondary Antibody	5 mL	RTU
Chromogen Component A	0.2 mL	RTU
Chromogen Component B	4 mL	RTU
Signal Enhancer	5 mL	RTU
Counter Staining Reagent	5 mL	RTU
Mounting Media	5 mL	RTU
Control Slide	1 slide (Optional)	FFPE
Datasheet	1 Copy	
Manual	1 Copy	

Storage Instructions

All the reagents are stored at 2-8°C. The kit is stable for 6 months from the date of receipt.

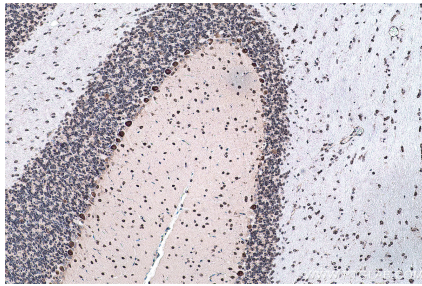
Background

YTHDF3, also named as YTH domain-containing family protein 3, is a 585 amino acid protein, which contains 1 YTH domain. YTHDF3 specifically recognizes and binds N6-methyladenosine (m6A)-containing RNAs. M6A is a modification present at internal sites of mRNAs and some non-coding RNAs and plays a role in the efficiency of mRNA splicing, processing and stability.

Synonyms

YTH domain family protein 3, YTH domain family, member 3, YTHDF3

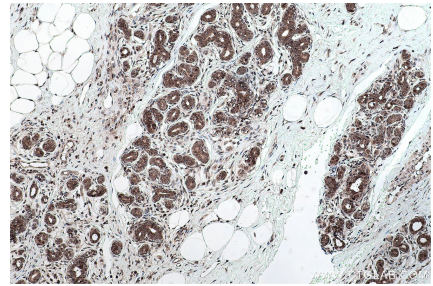
Selected Validation Data



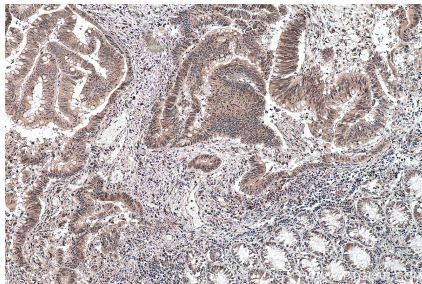
Immunohistochemical analysis of paraffin-embedded rat cerebellum tissue slide using KHC0159 (YTHDF3-specific IHC Kit).



Immunohistochemical analysis of paraffin-embedded mouse cerebellum tissue slide using KHC0159 (YTHDF3-specific IHC Kit).



Immunohistochemical analysis of paraffin-embedded human breast cancer tissue slide using KHC0159 (YTHDF3-specific IHC Kit).



Immunohistochemical analysis of paraffin-embedded human colon cancer tissue slide using KHC0159 (YTHDF3-specific IHC Kit).