

IHC*easy* IGF2BP1 Ready-To-Use IHC Kit

Catalog Number: **KHC0160**

General Information

Sample type:
FFPE tissue

Cited sample type:

Reactivity:
Human, Mouse, Rat

Cited Reactivity:

Assay type:
Immunohistochemistry

Primary antibody type:
Rabbit Polyclonal

Secondary antibody type:
Polymer-HRP-Goat anti-Rabbit

Kit Component

Component	Size	Concentration
Antigen Retrieval Buffer	100 mL	50×
Washing Buffer	100 mL ×2	20×
Blocking Buffer	5 mL	RTU
Primary Antibody	5 mL	RTU
Secondary Antibody	5 mL	RTU
Chromogen Component A	0.2 mL	RTU
Chromogen Component B	4 mL	RTU
Signal Enhancer	5 mL	RTU
Counter Staining Reagent	5 mL	RTU
Mounting Media	5 mL	RTU
Control Slide	1 slide (Optional)	FFPE
Datasheet	1 Copy	
Manual	1 Copy	

Storage Instructions

All the reagents are stored at 2-8°C. The kit is stable for 6 months from the date of receipt.

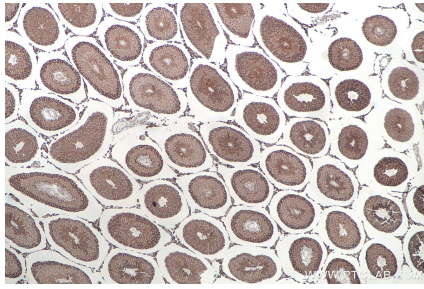
Background

IGF2BP1, also named as CRDBP, VICKZ1, ZBP1, is a 577 amino acid protein, which belongs to the RRM IMP/VICKZ family. IGF2BP1 can form homodimers and heterodimers with IGF2BP1 and IGF2BP3. IGF2BP1 is mainly expressed in the embryo, including in fetal liver, fetal lung, fetal kidney, fetal thymus and also expressed follicles of ovary, as well as in gonocytes of testis, spermatogonia, semen, oocytes and placenta. IGF2BP1 is Expressed in various cancers, including testis and lung cancers, as well as kidney, prostate and trachea cancers. IGF2BP1 as RNA-binding factor that recruits target transcripts to cytoplasmic protein-RNA complexes (mRNPs). It also modulates the rate and location at which target transcripts encounter the translational apparatus and shields them from endonuclease attacks or microRNA-mediated degradation.

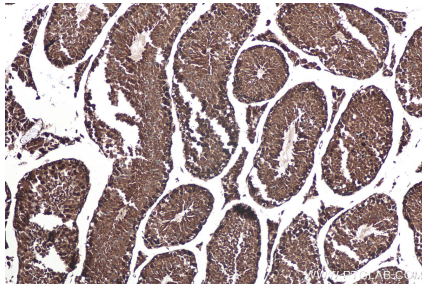
Synonyms

CRD BP, CRDBP, IGF II mRNA binding protein 1, IGF2 mRNA binding protein 1, IGF2BP1, IMP 1, IMP1, VICKZ family member 1, VICKZ1, ZBP 1, ZBP1, Zip code binding protein 1, Zipcode binding protein 1

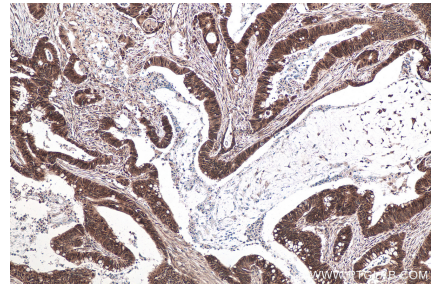
Selected Validation Data



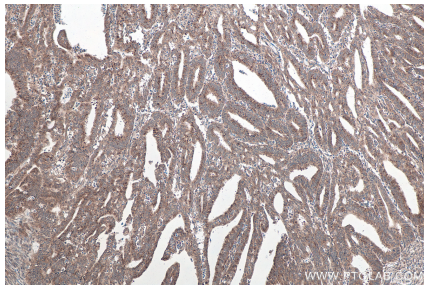
Immunohistochemical analysis of paraffin-embedded rat testis tissue slide using KHC0160 (IGF2BP1 IHC Kit).



Immunohistochemical analysis of paraffin-embedded mouse testis tissue slide using KHC0160 (IGF2BP1 IHC Kit).



Immunohistochemical analysis of paraffin-embedded human colon cancer tissue slide using KHC0160 (IGF2BP1 IHC Kit).



Immunohistochemical analysis of paraffin-embedded human endometrial cancer tissue slide using KHC0160 (IGF2BP1 IHC Kit).