

# IHC*easy* NKCC2/SLC12A1 Ready-To-Use IHC Kit

Catalog Number: **KHC0189**

## General Information

Sample type:  
FFPE tissue  
Cited sample type:  
Reactivity:  
Human, Mouse, Rat  
Cited Reactivity:

Assay type:  
Immunohistochemistry  
Primary antibody type:  
Rabbit Polyclonal  
Secondary antibody type:  
Polymer-HRP-Goat anti-Rabbit

## Kit Component

| Component                | Size               | Concentration |
|--------------------------|--------------------|---------------|
| Antigen Retrieval Buffer | 100 mL             | 50×           |
| Washing Buffer           | 100 mL ×2          | 20×           |
| Blocking Buffer          | 5 mL               | RTU           |
| Primary Antibody         | 5 mL               | RTU           |
| Secondary Antibody       | 5 mL               | RTU           |
| Chromogen Component A    | 0.2 mL             | RTU           |
| Chromogen Component B    | 4 mL               | RTU           |
| Signal Enhancer          | 5 mL               | RTU           |
| Counter Staining Reagent | 5 mL               | RTU           |
| Mounting Media           | 5 mL               | RTU           |
| Control Slide            | 1 slide (Optional) | FFPE          |
| Datasheet                | 1 Copy             |               |
| Manual                   | 1 Copy             |               |

## Storage Instructions

All the reagents are stored at 2-8°C. The kit is stable for 6 months from the date of receipt.

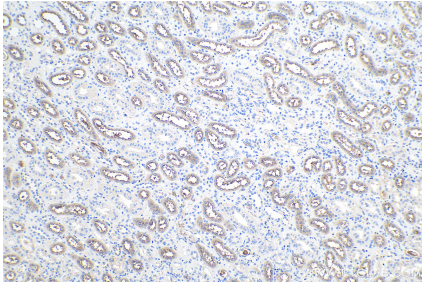
## Background

SLC12A1 (Solute carrier family 12 member 1), also named as NKCC2, is a kidney specific sodium, potassium and chloride ion cotransporter that plays an essential role in the urinary concentration and volume regulation. Mutation of SLC12A1 causes some diseases such as hyperparathyroidism, hypercalcemia, nephrogenic diabetes insipidus, and nephrocalcinosis.

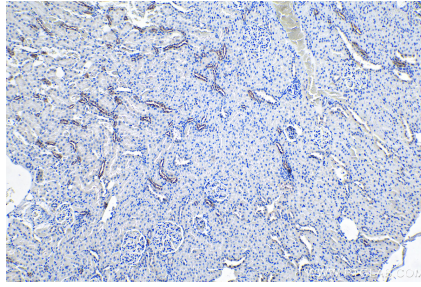
## Synonyms

BSC1, NKCC2, SLC12A1

## Selected Validation Data



Immunohistochemical analysis of paraffin-embedded human kidney tissue slide using KHC0189 (NKCC2 IHC Kit).



Immunohistochemical analysis of paraffin-embedded rat kidney tissue slide using KHC0189 (NKCC2 IHC Kit).