

# IHC*easy* Secretogranin II Ready-To-Use IHC Kit

Catalog Number: **KHC0203**

## General Information

**Sample type:**  
FFPE tissue

**Cited sample type:**

**Reactivity:**  
Human, Mouse, Rat

**Cited Reactivity:**

**Assay type:**  
Immunohistochemistry

**Primary antibody type:**  
Rabbit Polyclonal

**Secondary antibody type:**  
Polymer-HRP-Goat anti-Rabbit

## Kit Component

Component	Size	Concentration
Antigen Retrieval Buffer	100 mL	50×
Washing Buffer	100 mL ×2	20×
Blocking Buffer	5 mL	RTU
Primary Antibody	5 mL	RTU
Secondary Antibody	5 mL	RTU
Chromogen Component A	0.2 mL	RTU
Chromogen Component B	4 mL	RTU
Signal Enhancer	5 mL	RTU
Counter Staining Reagent	5 mL	RTU
Mounting Media	5 mL	RTU
Control Slide	1 slide (Optional)	FFPE
Datasheet	1 Copy	
Manual	1 Copy	

## Storage Instructions

All the reagents are stored at 2-8°C. The kit is stable for 6 months from the date of receipt.

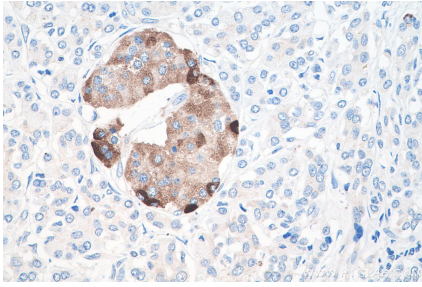
## Background

SCG2, also known as secretogranin II or Chromogranin C, is a member of the chromogranin/secretogranin family of neuroendocrine secretory proteins. It is widely distributed in nervous and endocrine tissues, and abundant in neuroendocrine granules. In the brain secretogranin II is almost completely processed to secretoneurin, a peptide involved in neurite outgrowth, neuroprotection and neuronal plasticity.

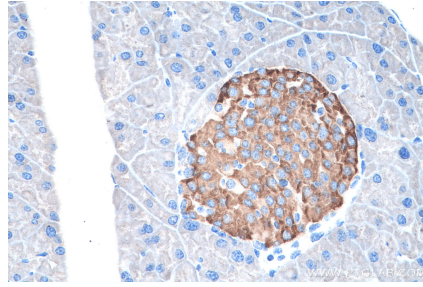
## Synonyms

CHGC, Chromogranin C, SCG2, Secretogranin 2, Secretogranin II, SgII, SN

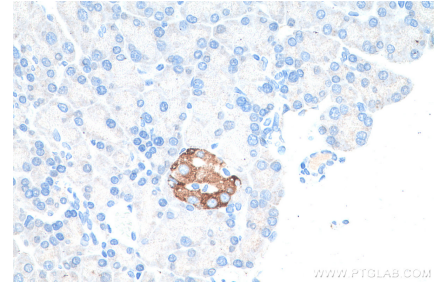
## Selected Validation Data



Immunohistochemical analysis of paraffin-embedded human pancreas cancer tissue slide using KHC0203 (Secretogranin II IHC Kit).



Immunohistochemical analysis of paraffin-embedded mouse pancreas tissue slide using KHC0203 (Secretogranin II IHC Kit).



Immunohistochemical analysis of paraffin-embedded rat pancreas tissue slide using KHC0203 (Secretogranin II IHC Kit).