

IHC*easy* DBC1/CCAR2 Ready-To-Use IHC Kit

Catalog Number: **KHC0242**

General Information

Sample type:
FFPE tissue
Cited sample type:
Reactivity:
Human
Cited Reactivity:

Assay type:
Immunohistochemistry
Primary antibody type:
Mouse Monoclonal
Secondary antibody type:
Polymer-HRP-Goat anti-Mouse

Kit Component

Component	Size	Concentration
Antigen Retrieval Buffer	100 mL	50×
Washing Buffer	100 mL ×2	20×
Blocking Buffer	5 mL	RTU
Primary Antibody	5 mL	RTU
Secondary Antibody	5 mL	RTU
Chromogen Component A	0.2 mL	RTU
Chromogen Component B	4 mL	RTU
Signal Enhancer	5 mL	RTU
Counter Staining Reagent	5 mL	RTU
Mounting Media	5 mL	RTU
Control Slide	1 slide (Optional)	FFPE
Datasheet	1 Copy	
Manual	1 Copy	

Storage Instructions

All the reagents are stored at 2-8°C. The kit is stable for 6 months from the date of receipt.

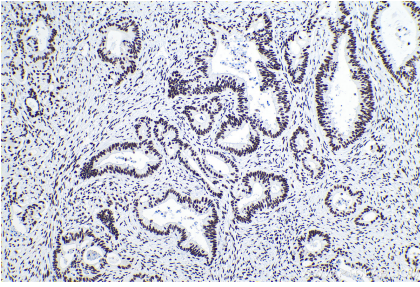
Background

Cell cycle and apoptosis regulator protein 2 (CCAR2), previously known as DBC1/KIAA1967, regulates diverse cellular functions including transcription, mRNA splicing, metabolism, and circadian cycle. CCAR2 is a critical regulator of cell death or survival following cellular stresses. CCAR2 is a widely expressed protein involved in the regulation of a variety of transcriptional complexes. High expression of CCAR2 correlates with poor outcomes in many human tumor types such as squamous cell carcinoma (SCC).

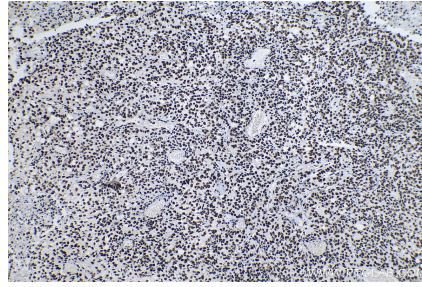
Synonyms

CCAR2, cell cycle and apoptosis regulator 2, DBC 1, DBC.1, DBC1, KIAA1967, p30 DBC, Protein KIAA1967

Selected Validation Data



Immunohistochemical analysis of paraffin-embedded human colon cancer tissue slide using KHC0242 (DBC1/CCAR2 IHC Kit).



Immunohistochemical analysis of paraffin-embedded human stomach cancer tissue slide using KHC0242 (DBC1/CCAR2 IHC Kit).