

IHC*easy* CDH17 Ready-To-Use IHC Kit

Catalog Number: **KHC0255**

General Information

Sample type:
FFPE tissue
Cited sample type:
Reactivity:
Human, Rat
Cited Reactivity:

Assay type:
Immunohistochemistry
Primary antibody type:
Mouse Monoclonal
Secondary antibody type:
Polymer-HRP-Goat anti-Mouse

Kit Component

Component	Size	Concentration
Antigen Retrieval Buffer	100 mL	50×
Washing Buffer	100 mL ×2	20×
Blocking Buffer	5 mL	RTU
Primary Antibody	5 mL	RTU
Secondary Antibody	5 mL	RTU
Chromogen Component A	0.2 mL	RTU
Chromogen Component B	4 mL	RTU
Signal Enhancer	5 mL	RTU
Counter Staining Reagent	5 mL	RTU
Mounting Media	5 mL	RTU
Control Slide	1 slide (Optional)	FFPE
Datasheet	1 Copy	
Manual	1 Copy	

Storage Instructions

All the reagents are stored at 2-8°C. The kit is stable for 6 months from the date of receipt.

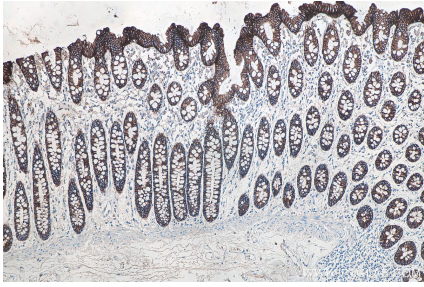
Background

Cadherin-17, also known as LI-cadherin, is a member of the cadherin superfamily. Cadherins are transmembrane proteins that mediate cell-cell adhesion, play important roles during embryogenesis, and is crucial for tissue morphogenesis and maintenance. Cadherin-17 is a component of the gastrointestinal tract and pancreatic ducts and is involved in intestinal peptide transport. It may also play a role in the morphological organization of liver and intestine.

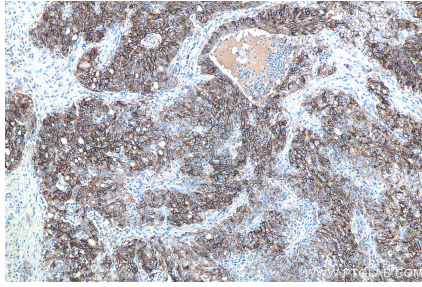
Synonyms

Cadherin-17, CDH16, CDH17, HPT 1, HPT1, LI cadherin, Liver intestine cadherin

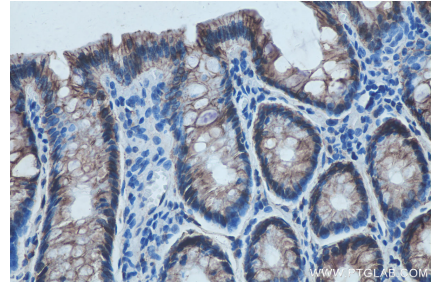
Selected Validation Data



Immunohistochemical analysis of paraffin-embedded human colon tissue slide using KHC0255 (CDH17 IHC Kit).



Immunohistochemical analysis of paraffin-embedded human stomach cancer tissue slide using KHC0255 (CDH17 IHC Kit).



Immunohistochemical analysis of paraffin-embedded rat colon tissue slide using KHC0255 (CDH17 IHC Kit).