

IHC*easy* Dystrophin/DMD Ready-To-Use IHC Kit

Catalog Number: **KHC0284**

General Information

Sample type:
FFPE tissue

Cited sample type:

Reactivity:
Human, Mouse, Rat

Cited Reactivity:

Assay type:
Immunohistochemistry

Primary antibody type:
Rabbit Polyclonal

Secondary antibody type:
Polymer-HRP-Goat anti-Rabbit

Kit Component

Component	Size	Concentration
Antigen Retrieval Buffer	100 mL	50×
Washing Buffer	100 mL ×2	20×
Blocking Buffer	5 mL	RTU
Primary Antibody	5 mL	RTU
Secondary Antibody	5 mL	RTU
Chromogen Component A	0.2 mL	RTU
Chromogen Component B	4 mL	RTU
Signal Enhancer	5 mL	RTU
Counter Staining Reagent	5 mL	RTU
Mounting Media	5 mL	RTU
Control Slide	1 slide (Optional)	FFPE
Datasheet	1 Copy	
Manual	1 Copy	

Storage Instructions

All the reagents are stored at 2-8°C. The kit is stable for 6 months from the date of receipt.

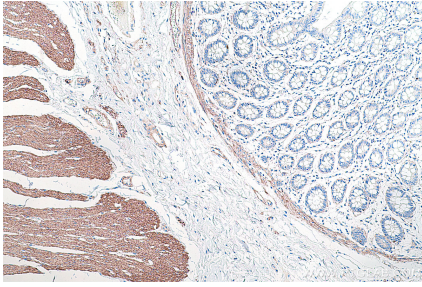
Background

Dystrophin (DMD or BMD) is a large muscle protein whose mutations cause Duchenne muscular dystrophy (DMD) and Becker muscular dystrophy (BMD), the childhood neuromuscular disorders that result in progressive muscle weakness, respiratory difficulties and cardiovascular dysfunction. Dystrophin is a crucial component of the dystrophin-glycoprotein complex which is essential for muscle membrane integrity and stability. Dystrophin is located on the cytoplasmic face of the sarcolemma and connects the cytoskeletal network to the sarcolemma and extracellular matrix.

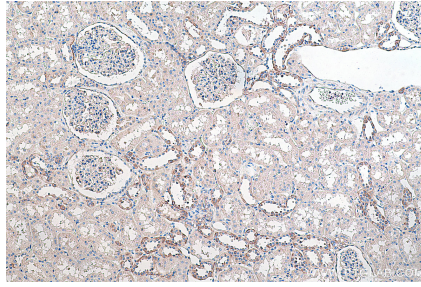
Synonyms

BMD, CMD3B, DMD, DXS142, DXS164, DXS206, DXS230, DXS239, DXS268, DXS269, DXS270, DXS272, dystrophin

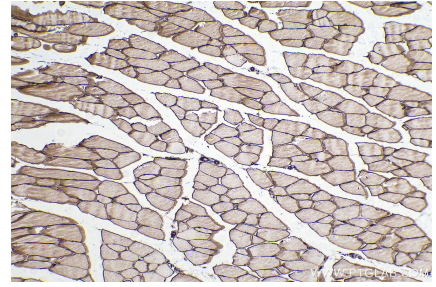
Selected Validation Data



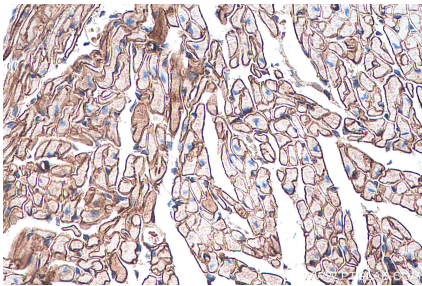
Immunohistochemical analysis of paraffin-embedded human colon tissue slide using KHC0284 (Dystrophin/DMD IHC Kit).



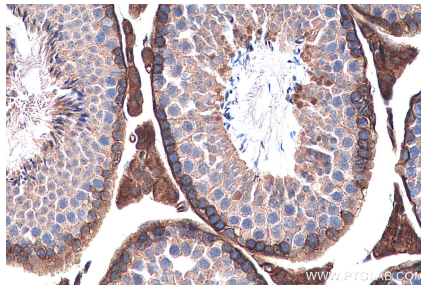
Immunohistochemical analysis of paraffin-embedded human kidney tissue slide using KHC0284 (Dystrophin/DMD IHC Kit).



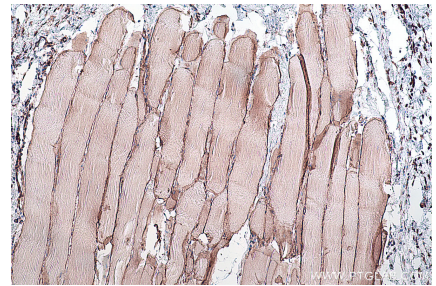
Immunohistochemical analysis of paraffin-embedded mouse skeletal muscle tissue slide using KHC0284 (Dystrophin/DMD IHC Kit).



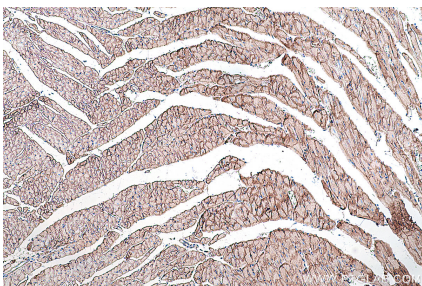
Immunohistochemical analysis of paraffin-embedded mouse heart tissue slide using KHC0284 (Dystrophin/DMD IHC Kit).



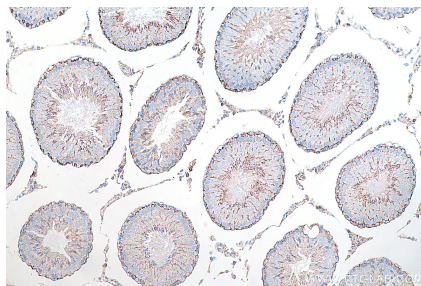
Immunohistochemical analysis of paraffin-embedded mouse testis tissue slide using KHC0284 (Dystrophin/DMD IHC Kit).



Immunohistochemical analysis of paraffin-embedded rat skeletal muscle tissue slide using KHC0284 (Dystrophin/DMD IHC Kit).



Immunohistochemical analysis of paraffin-embedded rat heart tissue slide using KHC0284 (Dystrophin/DMD IHC Kit).



Immunohistochemical analysis of paraffin-embedded rat testis tissue slide using KHC0284 (Dystrophin/DMD IHC Kit).