

IHC*easy* MUC1 Ready-To-Use IHC Kit

Catalog Number: **KHC0304**

General Information

Sample type:
FFPE tissue
Cited sample type:
Reactivity:
Human
Cited Reactivity:

Assay type:
Immunohistochemistry
Primary antibody type:
Rabbit Polyclonal
Secondary antibody type:
Polymer-HRP-Goat anti-Rabbit

Kit Component

| Component | Size | Concentration |
|--------------------------|--------------------|---------------|
| Antigen Retrieval Buffer | 100 mL | 50× |
| Washing Buffer | 100 mL ×2 | 20× |
| Blocking Buffer | 5 mL | RTU |
| Primary Antibody | 5 mL | RTU |
| Secondary Antibody | 5 mL | RTU |
| Chromogen Component A | 0.2 mL | RTU |
| Chromogen Component B | 4 mL | RTU |
| Signal Enhancer | 5 mL | RTU |
| Counter Staining Reagent | 5 mL | RTU |
| Mounting Media | 5 mL | RTU |
| Control Slide | 1 slide (Optional) | FFPE |
| Datasheet | 1 Copy | |
| Manual | 1 Copy | |

Storage Instructions

All the reagents are stored at 2-8°C. The kit is stable for 6 months from the date of receipt.

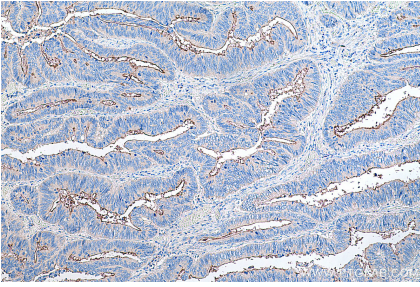
Background

MUC1 is a type I transmembrane glycoprotein expressed by various epithelial cells of female reproductive tract, lung, breast, kidney, stomach, and pancreas. Among the known mucins, MUC1 is best studied and plays crucial roles in regulating many cellular properties, including cell proliferation, apoptosis, adhesion, and invasion. MUC1 is overexpressed in a wide range of human epithelial malignancies.

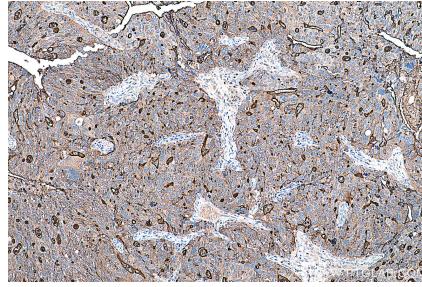
Synonyms

CA15 3, CA153, CA15-3, Carcinoma associated mucin, CD227, EMA, Episialin, H23AG, KL-6, MAM6, MUC 1, MUC1, MUC1 beta, MUC1 CT, MUC1 NT, MUC1/CA15-3 C-terminal, Mucin 1, Peanut reactive urinary mucin, PEM, PEMT, Polymorphic epithelial mucin, PUM, Tumor associated mucin

Selected Validation Data



Immunohistochemical analysis of paraffin-embedded human colon cancer tissue slide using KHC0304 (MUC1 IHC Kit).



Immunohistochemical analysis of paraffin-embedded human ovary tumor tissue slide using KHC0304 (MUC1 IHC Kit).