

IHC*easy* CAPN3 Ready-To-Use IHC Kit

Catalog Number: **KHC0323**

General Information

Sample type:
FFPE tissue

Cited sample type:

Reactivity:
Human, Mouse, Rat

Cited Reactivity:

Assay type:
Immunohistochemistry

Primary antibody type:
Rabbit Polyclonal

Secondary antibody type:
Polymer-HRP-Goat anti-Rabbit

Kit Component

Component	Size	Concentration
Antigen Retrieval Buffer	100 mL	50×
Washing Buffer	100 mL ×2	20×
Blocking Buffer	5 mL	RTU
Primary Antibody	5 mL	RTU
Secondary Antibody	5 mL	RTU
Chromogen Component A	0.2 mL	RTU
Chromogen Component B	4 mL	RTU
Signal Enhancer	5 mL	RTU
Counter Staining Reagent	5 mL	RTU
Mounting Media	5 mL	RTU
Control Slide	1 slide (Optional)	FFPE
Datasheet	1 Copy	
Manual	1 Copy	

Storage Instructions

All the reagents are stored at 2-8°C. The kit is stable for 6 months from the date of receipt.

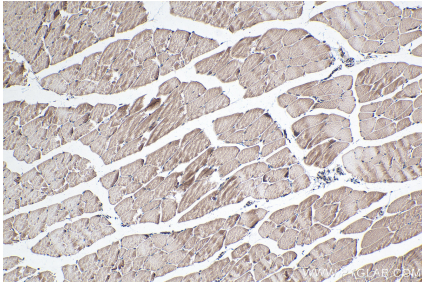
Background

Calpain 3 (CAPN3), a major intracellular protease, is a muscle-specific member of the calpain large subunit family that specifically binds to titin. CAPN3 plays a role in the dysferlin protein complex and that disruption of CAPN3 function may affect muscle membrane repair and remodeling.

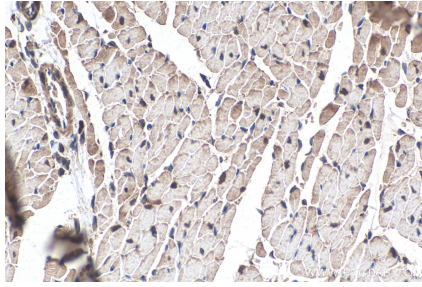
Synonyms

Calpain 3, calpain 3, (p94), Calpain L3, Calpain p94, CANP 3, CANP3, CANPL3, CAPN3, LGMD2, LGMD2A, nCL 1, NCL1, New calpain 1, p94

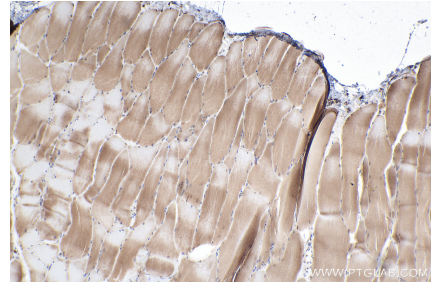
Selected Validation Data



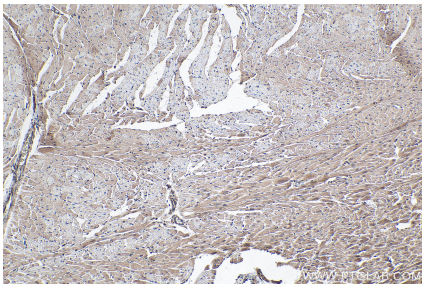
Immunohistochemical analysis of paraffin-embedded mouse skeletal muscle tissue slide using KHC0323 (CAPN3 IHC Kit).



Immunohistochemical analysis of paraffin-embedded mouse heart tissue slide using KHC0323 (CAPN3 IHC Kit).



Immunohistochemical analysis of paraffin-embedded rat skeletal muscle tissue slide using KHC0323 (CAPN3 IHC Kit).



Immunohistochemical analysis of paraffin-embedded rat heart tissue slide using KHC0323 (CAPN3 IHC Kit).