

# IHC*easy* MYL9 Ready-To-Use IHC Kit

Catalog Number: **KHC0345**

## General Information

Sample type:  
FFPE tissue  
Cited sample type:  
Reactivity:  
Human, Mouse, Rat  
Cited Reactivity:

Assay type:  
Immunohistochemistry  
Primary antibody type:  
Rabbit Polyclonal  
Secondary antibody type:  
Polymer-HRP-Goat anti-Rabbit

## Kit Component

Component	Size	Concentration
Antigen Retrieval Buffer	100 mL	50×
Washing Buffer	100 mL ×2	20×
Blocking Buffer	5 mL	RTU
Primary Antibody	5 mL	RTU
Secondary Antibody	5 mL	RTU
Chromogen Component A	0.2 mL	RTU
Chromogen Component B	4 mL	RTU
Signal Enhancer	5 mL	RTU
Counter Staining Reagent	5 mL	RTU
Mounting Media	5 mL	RTU
Control Slide	1 slide (Optional)	FFPE
Datasheet	1 Copy	
Manual	1 Copy	

## Storage Instructions

All the reagents are stored at 2-8°C. The kit is stable for 6 months from the date of receipt.

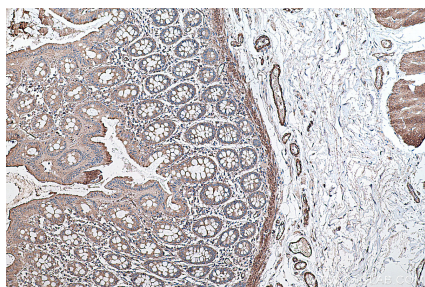
## Background

Myosin regulatory light polypeptide 9 (MYL9), also known as MLC2, belongs to the myosin regulatory subunits. It plays an important role in regulation of both smooth muscle and nonmuscle cell contractile activity via its phosphorylation at Thr19 and Ser20. Implicated in cytokinesis, receptor capping, and cell locomotion. Some studies have demonstrated that MYL9 may play important roles in various human cancers. MYL9 was the only gene differentially expressed in the aged versus young injured arteries in the rat smooth muscle cell layers.

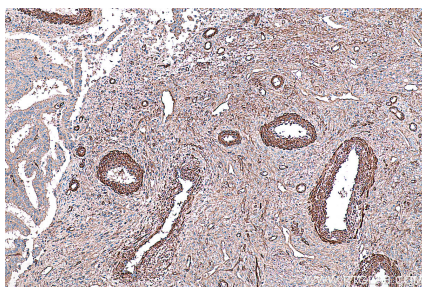
## Synonyms

20 kDa myosin light chain, LC20, MLC 2C, MLC2, MRLC1, MYL9, Myosin RLC, MYRL2

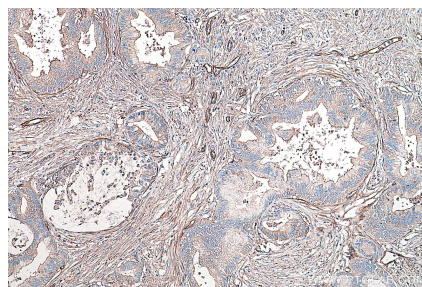
## Selected Validation Data



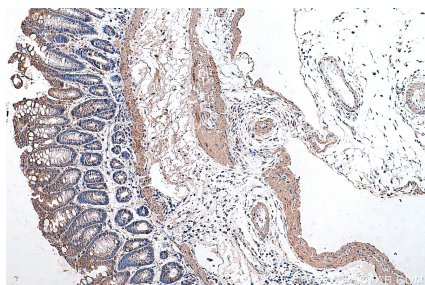
Immunohistochemical analysis of paraffin-embedded human colon tissue slide using KHC0345 (MYL9 IHC Kit).



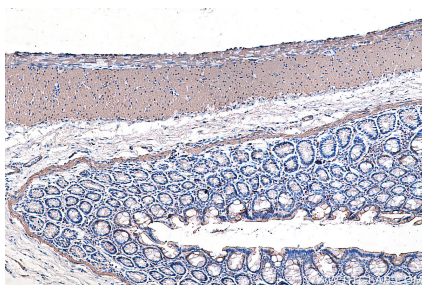
Immunohistochemical analysis of paraffin-embedded human ovary tumor tissue slide using KHC0345 (MYL9 IHC Kit).



Immunohistochemical analysis of paraffin-embedded human pancreas cancer tissue slide using KHC0345 (MYL9 IHC Kit).



Immunohistochemical analysis of paraffin-embedded mouse colon tissue slide using KHC0345 (MYL9 IHC Kit).



Immunohistochemical analysis of paraffin-embedded rat colon tissue slide using KHC0345 (MYL9 IHC Kit).