

# IHC*easy* CHCHD2 Ready-To-Use IHC Kit

Catalog Number: **KHC0410**

## General Information

Sample type:  
FFPE tissue  
Cited sample type:  
Reactivity:  
Human, Mouse  
Cited Reactivity:

Assay type:  
Immunohistochemistry  
Primary antibody type:  
Rabbit Polyclonal  
Secondary antibody type:  
Polymer-HRP-Goat anti-Rabbit

## Kit Component

Component	Size	Concentration
Antigen Retrieval Buffer	100 mL	50×
Washing Buffer	100 mL ×2	20×
Blocking Buffer	5 mL	RTU
Primary Antibody	5 mL	RTU
Secondary Antibody	5 mL	RTU
Chromogen Component A	0.2 mL	RTU
Chromogen Component B	4 mL	RTU
Signal Enhancer	5 mL	RTU
Counter Staining Reagent	5 mL	RTU
Mounting Media	5 mL	RTU
Control Slide	1 slide (Optional)	FFPE
Datasheet	1 Copy	
Manual	1 Copy	

## Storage Instructions

All the reagents are stored at 2-8°C. The kit is stable for 6 months from the date of receipt.

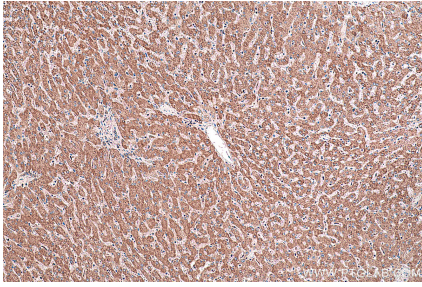
## Background

CHCHD2 is a widely expressed mitochondrion-localized protein. CHCHD2 contains a C-terminal CHCH (coiled-coil helix coiled-coil helix) domain. The function of the CHCH domain is not well understood, and the few characterized proteins that harbor this domain have diverse functions. Mutations in CHCHD2 gene have been reported in autosomal dominant Parkinson's disease (ADPD).

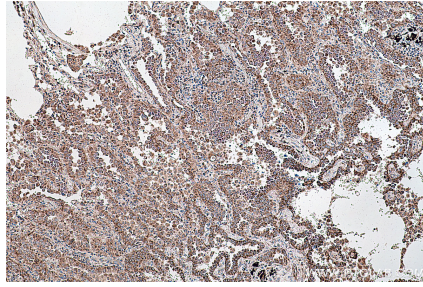
## Synonyms

C7orf17, CHCHD2, MNRR1, NS2TP

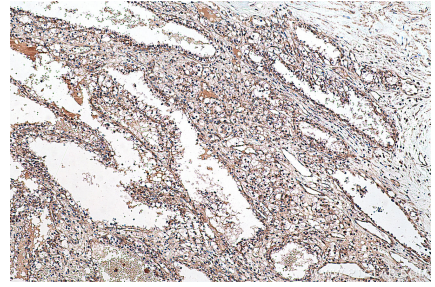
## Selected Validation Data



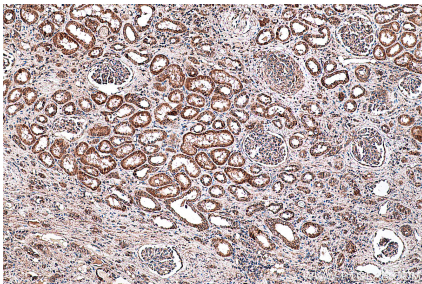
Immunohistochemical analysis of paraffin-embedded human liver tissue slide using KHC0410 (CHCHD2 IHC Kit).



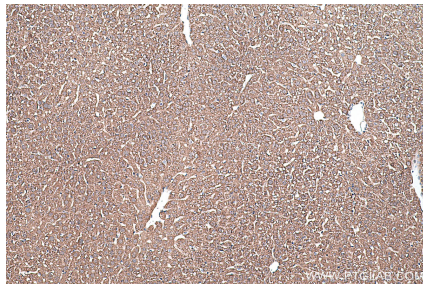
Immunohistochemical analysis of paraffin-embedded human lung cancer tissue slide using KHC0410 (CHCHD2 IHC Kit).



Immunohistochemical analysis of paraffin-embedded human renal cell carcinoma tissue slide using KHC0410 (CHCHD2 IHC Kit).



Immunohistochemical analysis of paraffin-embedded human renal cell carcinoma(NAT) tissue slide using KHC0410 (CHCHD2 IHC Kit).



Immunohistochemical analysis of paraffin-embedded mouse liver tissue slide using KHC0410 (CHCHD2 IHC Kit).