

# IHC*easy* IFI30 Ready-To-Use IHC Kit

Catalog Number: **KHC0429**

## General Information

Sample type:  
FFPE tissue  
Cited sample type:  
Reactivity:  
Human  
Cited Reactivity:

Assay type:  
Immunohistochemistry  
Primary antibody type:  
Rabbit Polyclonal  
Secondary antibody type:  
Polymer-HRP-Goat anti-Rabbit

## Kit Component

Component	Size	Concentration
Antigen Retrieval Buffer	100 mL	50×
Washing Buffer	100 mL ×2	20×
Blocking Buffer	5 mL	RTU
Primary Antibody	5 mL	RTU
Secondary Antibody	5 mL	RTU
Chromogen Component A	0.2 mL	RTU
Chromogen Component B	4 mL	RTU
Signal Enhancer	5 mL	RTU
Counter Staining Reagent	5 mL	RTU
Mounting Media	5 mL	RTU
Control Slide	1 slide (Optional)	FFPE
Datasheet	1 Copy	
Manual	1 Copy	

## Storage Instructions

All the reagents are stored at 2-8°C. The kit is stable for 6 months from the date of receipt.

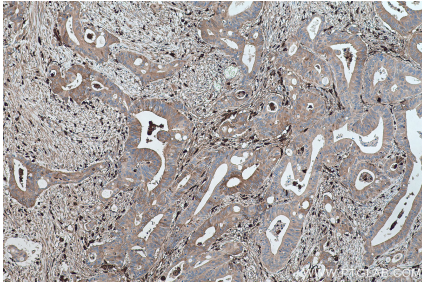
## Background

IFI30(interferon, gamma-inducible protein 30) is also named as IP30, GILT, IFI-30, MGC32056, IFI30 and belongs to the GILT family. It can facilitate the processing and presentation to antigen-specific T cells of protein antigens containing disulfide bonds. IFI30 is inducibly up-regulated by IFN- $\gamma$ , as are MHC class II molecules, the associated invariant chain, and HLA-DM, which catalyses peptide loading in MHCs.

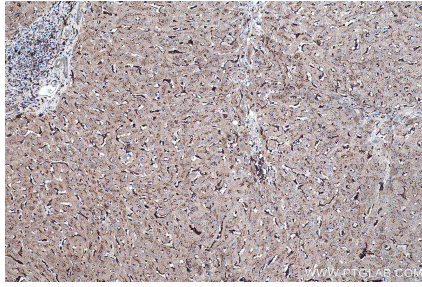
## Synonyms

GILT, IFI 30, IFI30, IP30

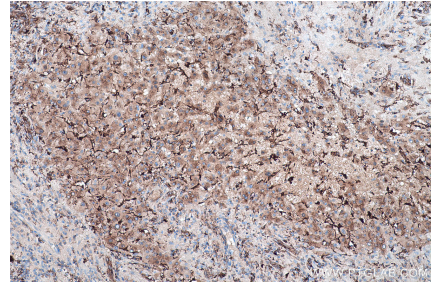
## Selected Validation Data



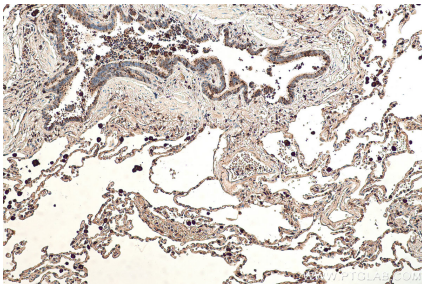
Immunohistochemical analysis of paraffin-embedded human colon cancer tissue slide using KHC0429 (IF130 IHC Kit).



Immunohistochemical analysis of paraffin-embedded human liver tissue slide using KHC0429 (IF130 IHC Kit).



Immunohistochemical analysis of paraffin-embedded human liver cancer tissue slide using KHC0429 (IF130 IHC Kit).



Immunohistochemical analysis of paraffin-embedded human lung tissue slide using KHC0429 (IF130 IHC Kit).