

IHC*easy* NFIC Ready-To-Use IHC Kit

Catalog Number: **KHC0441**

General Information

Sample type:
FFPE tissue

Cited sample type:

Reactivity:
Human, Mouse, Rat

Cited Reactivity:

Assay type:
Immunohistochemistry

Primary antibody type:
Rabbit Polyclonal

Secondary antibody type:
Polymer-HRP-Goat anti-Rabbit

Kit Component

Component	Size	Concentration
Antigen Retrieval Buffer	100 mL	50×
Washing Buffer	100 mL ×2	20×
Blocking Buffer	5 mL	RTU
Primary Antibody	5 mL	RTU
Secondary Antibody	5 mL	RTU
Chromogen Component A	0.2 mL	RTU
Chromogen Component B	4 mL	RTU
Signal Enhancer	5 mL	RTU
Counter Staining Reagent	5 mL	RTU
Mounting Media	5 mL	RTU
Control Slide	1 slide (Optional)	FFPE
Datasheet	1 Copy	
Manual	1 Copy	

Storage Instructions

All the reagents are stored at 2-8°C. The kit is stable for 6 months from the date of receipt.

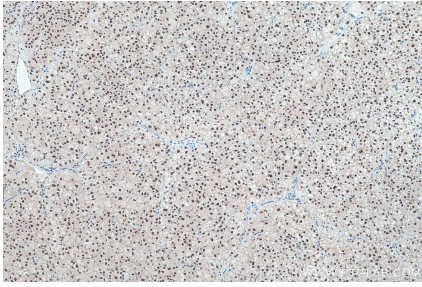
Background

NFIC, also named as Nuclear factor 1 C-type, is a 508 amino acid protein, which contains 1 CTF/NF-I DNA-binding domain and belongs to the CTF/NF-I family. NFIC localizes in the nucleus and recognizes and binds the palindromic sequence 5'-TTGGCNNNNGCCAA-3' present in viral and cellular promoters and in the origin of replication of adenovirus type 2. These proteins are individually capable of activating transcription and replication.

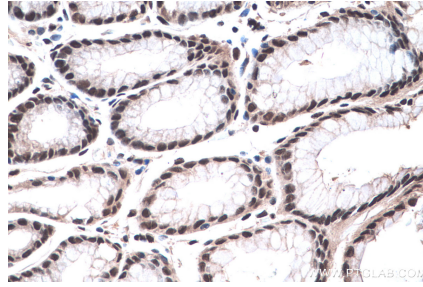
Synonyms

CTF, CTF5, NF I, NF I/C, NF1 C, NFI, NFI C, NFIC, Nuclear factor 1 C type, Nuclear factor 1/C, Nuclear factor I/C, TGGCA binding protein

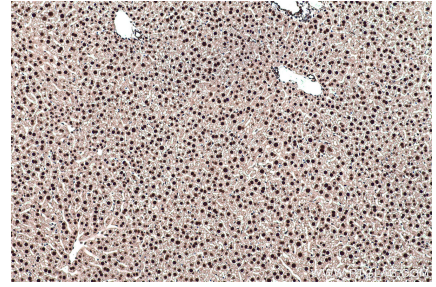
Selected Validation Data



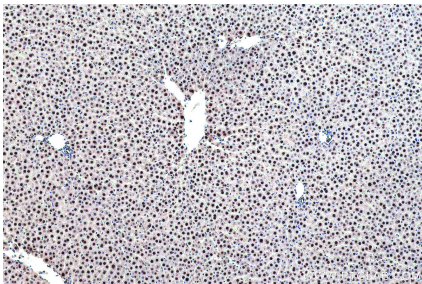
Immunohistochemical analysis of paraffin-embedded human liver cancer tissue slide using KHC0441 (NFIC IHC Kit).



Immunohistochemical analysis of paraffin-embedded human stomach cancer (NAT) tissue slide using KHC0441 (NFIC IHC Kit).



Immunohistochemical analysis of paraffin-embedded mouse liver tissue slide using KHC0441 (NFIC IHC Kit).



Immunohistochemical analysis of paraffin-embedded rat liver tissue slide using KHC0441 (NFIC IHC Kit).