

# IHC*easy* ALDOA Ready-To-Use IHC Kit

Catalog Number: **KHC0488**

## General Information

**Sample type:**  
FFPE tissue

**Cited sample type:**

**Reactivity:**  
Human, Mouse, Rat

**Cited Reactivity:**

**Assay type:**  
Immunohistochemistry

**Primary antibody type:**  
Mouse Monoclonal

**Secondary antibody type:**  
Polymer-HRP-Goat anti-Mouse

## Kit Component

Component	Size	Concentration
Antigen Retrieval Buffer	100 mL	50×
Washing Buffer	100 mL ×2	20×
Blocking Buffer	5 mL	RTU
Primary Antibody	5 mL	RTU
Secondary Antibody	5 mL	RTU
Chromogen Component A	0.2 mL	RTU
Chromogen Component B	4 mL	RTU
Signal Enhancer	5 mL	RTU
Counter Staining Reagent	5 mL	RTU
Mounting Media	5 mL	RTU
Control Slide	1 slide (Optional)	FFPE
Datasheet	1 Copy	
Manual	1 Copy	

## Storage Instructions

All the reagents are stored at 2-8°C. The kit is stable for 6 months from the date of receipt.

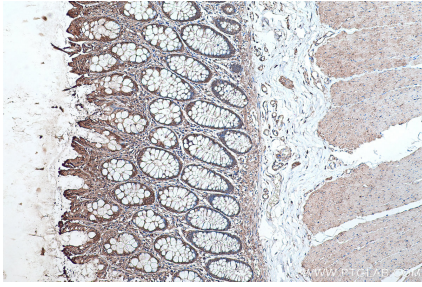
## Background

ALDOA (Fructose-bisphosphate aldolase A) is also named as lung cancer antigen NY-LU-1, muscle-type aldolase, ALDA and belongs to the class I fructose-bisphosphate aldolase family. The ALDOA gene encodes a homotetrameric protein. It is found in skeletal muscle and red blood cells, and functions in glycolysis, promoting the reversible cleavage of FBP to triose phosphate, G-3-P and DHAP. ALDOA is upregulated in various cancers, including human lung squamous and renal cell carcinomas.

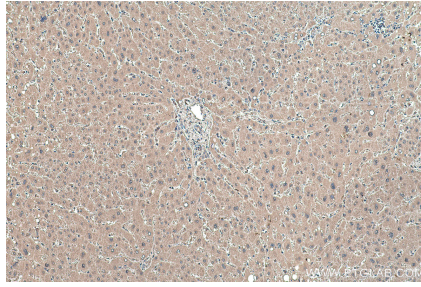
## Synonyms

ALDA, ALDOA, Lung cancer antigen NY LU 1, Muscle type aldolase

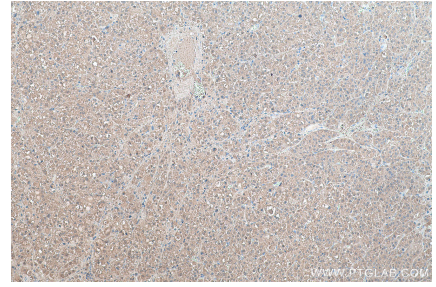
## Selected Validation Data



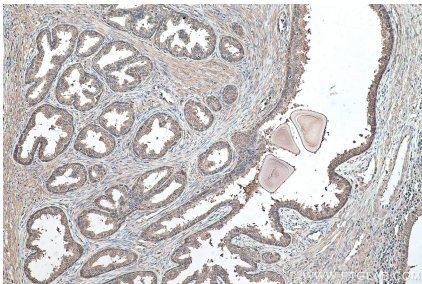
Immunohistochemical analysis of paraffin-embedded human colon tissue slide using KHC0488 (ALDOA IHC Kit).



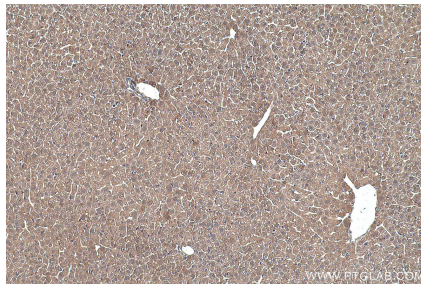
Immunohistochemical analysis of paraffin-embedded human liver tissue slide using KHC0488 (ALDOA IHC Kit).



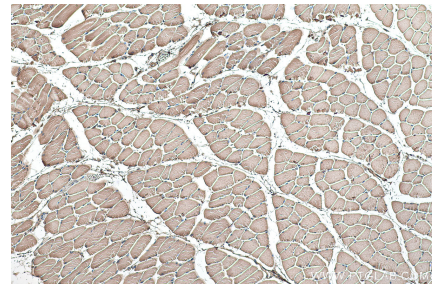
Immunohistochemical analysis of paraffin-embedded human liver cancer tissue slide using KHC0488 (ALDOA IHC Kit).



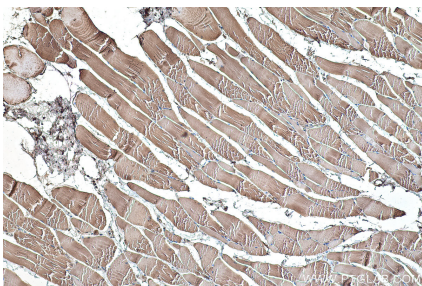
Immunohistochemical analysis of paraffin-embedded human prostate cancer tissue slide using KHC0488 (ALDOA IHC Kit).



Immunohistochemical analysis of paraffin-embedded mouse liver tissue slide using KHC0488 (ALDOA IHC Kit).



Immunohistochemical analysis of paraffin-embedded mouse skeletal muscle tissue slide using KHC0488 (ALDOA IHC Kit).



Immunohistochemical analysis of paraffin-embedded rat skeletal muscle tissue slide using KHC0488 (ALDOA IHC Kit).