

IHC*easy* CES1 Ready-To-Use IHC Kit

Catalog Number: **KHC0503**

General Information

Sample type:
FFPE tissue
Cited sample type:
Reactivity:
Human
Cited Reactivity:

Assay type:
Immunohistochemistry
Primary antibody type:
Mouse Monoclonal
Secondary antibody type:
Polymer-HRP-Goat anti-Mouse

Kit Component

Component	Size	Concentration
Antigen Retrieval Buffer	100 mL	50×
Washing Buffer	100 mL ×2	20×
Blocking Buffer	5 mL	RTU
Primary Antibody	5 mL	RTU
Secondary Antibody	5 mL	RTU
Chromogen Component A	0.2 mL	RTU
Chromogen Component B	4 mL	RTU
Signal Enhancer	5 mL	RTU
Counter Staining Reagent	5 mL	RTU
Mounting Media	5 mL	RTU
Control Slide	1 slide (Optional)	FFPE
Datasheet	1 Copy	
Manual	1 Copy	

Storage Instructions

All the reagents are stored at 2-8°C. The kit is stable for 6 months from the date of receipt.

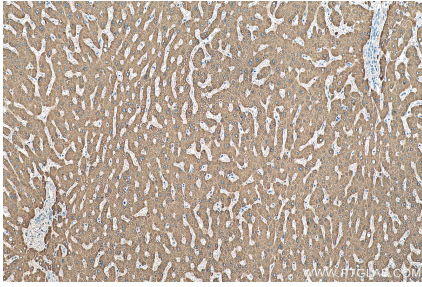
Background

CES1(liver carboxylesterase 1) is also named as CES2, SES1 and belongs to the type-B carboxylesterase/lipase family. The deduced 567-amino acid protein contains a putative 18-amino acid signal peptide and a characteristic C-terminal endoplasmic reticulum retention signal (HXEL). It is the major hydrolytic enzyme responsible for the metabolism of numerous therapeutic agents as well as endogenous substrates.

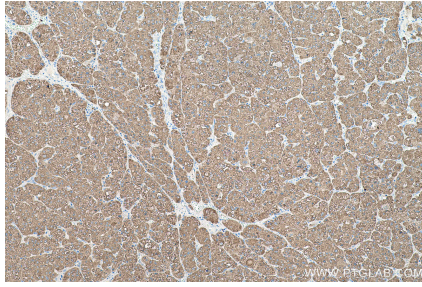
Synonyms

ACAT, Brain carboxylesterase hBr1, CEH, CES1, CES2, Cocaine carboxylesterase, Egasyn, HMSE, HMSE1, Liver carboxylesterase 1, PCE 1, REH, Retinyl ester hydrolase, Serine esterase 1, SES1, TGH, Triacylglycerol hydrolase

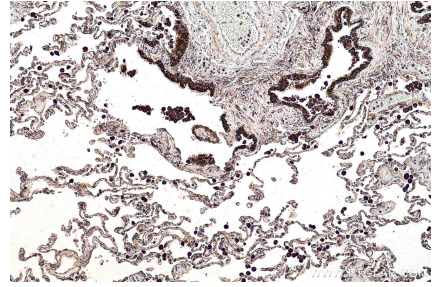
Selected Validation Data



Immunohistochemical analysis of paraffin-embedded human liver tissue slide using KHC0503 (CES1 IHC Kit).



Immunohistochemical analysis of paraffin-embedded human liver cancer tissue slide using KHC0503 (CES1 IHC Kit).



Immunohistochemical analysis of paraffin-embedded human lung tissue slide using KHC0503 (CES1 IHC Kit).