

IHC*easy* METTL7A Ready-To-Use IHC Kit

Catalog Number: **KHC0532**

General Information

Sample type:
FFPE tissue
Cited sample type:
Reactivity:
Human, Rat
Cited Reactivity:

Assay type:
Immunohistochemistry
Primary antibody type:
Mouse Monoclonal
Secondary antibody type:
Polymer-HRP-Goat anti-Mouse

Kit Component

Component	Size	Concentration
Antigen Retrieval Buffer	100 mL	50×
Washing Buffer	100 mL ×2	20×
Blocking Buffer	5 mL	RTU
Primary Antibody	5 mL	RTU
Secondary Antibody	5 mL	RTU
Chromogen Component A	0.2 mL	RTU
Chromogen Component B	4 mL	RTU
Signal Enhancer	5 mL	RTU
Counter Staining Reagent	5 mL	RTU
Mounting Media	5 mL	RTU
Control Slide	1 slide (Optional)	FFPE
Datasheet	1 Copy	
Manual	1 Copy	

Storage Instructions

All the reagents are stored at 2-8°C. The kit is stable for 6 months from the date of receipt.

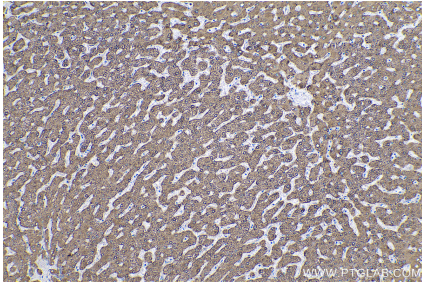
Background

Methyltransferase like 7A (METTL7A) is a 244 amino acid protein which belongs to the methyltransferase super family. Methyltransferase can transfer a methyl group from a donor to an acceptor. Methylation may be linked to cancer development as methylation of tumor suppressor genes promotes tumorigenesis and metastasis.

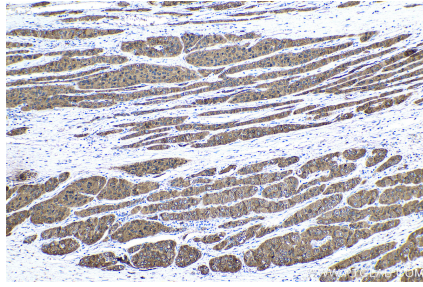
Synonyms

AAM B, DKFZp586A0522, methyltransferase like 7A, METTL7A, Protein AAM B, UNQ1902/PRO4348

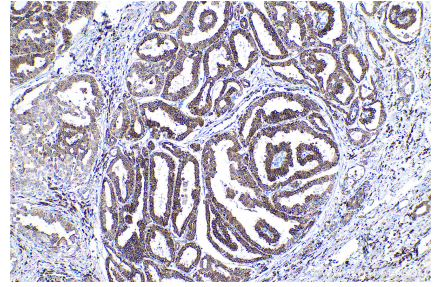
Selected Validation Data



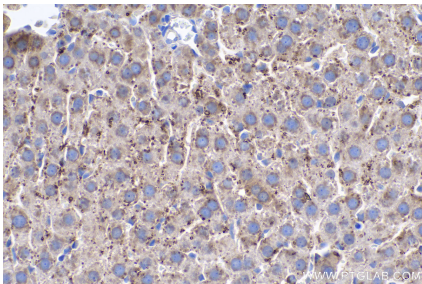
Immunohistochemical analysis of paraffin-embedded human liver tissue slide using KHC0532 (METTL7A IHC Kit).



Immunohistochemical analysis of paraffin-embedded human liver cancer tissue slide using KHC0532 (METTL7A IHC Kit).



Immunohistochemical analysis of paraffin-embedded human thyroid cancer tissue slide using KHC0532 (METTL7A IHC Kit).



Immunohistochemical analysis of paraffin-embedded rat liver tissue slide using KHC0532 (METTL7A IHC Kit).