

# IHC*easy* HSD17B10 Ready-To-Use IHC Kit

Catalog Number: **KHC0543**

## General Information

Sample type:  
FFPE tissue  
Cited sample type:  
Reactivity:  
Human  
Cited Reactivity:

Assay type:  
Immunohistochemistry  
Primary antibody type:  
Mouse Monoclonal  
Secondary antibody type:  
Polymer-HRP-Goat anti-Mouse

## Kit Component

Component	Size	Concentration
Antigen Retrieval Buffer	100 mL	50×
Washing Buffer	100 mL ×2	20×
Blocking Buffer	5 mL	RTU
Primary Antibody	5 mL	RTU
Secondary Antibody	5 mL	RTU
Chromogen Component A	0.2 mL	RTU
Chromogen Component B	4 mL	RTU
Signal Enhancer	5 mL	RTU
Counter Staining Reagent	5 mL	RTU
Mounting Media	5 mL	RTU
Control Slide	1 slide (Optional)	FFPE
Datasheet	1 Copy	
Manual	1 Copy	

## Storage Instructions

All the reagents are stored at 2-8°C. The kit is stable for 6 months from the date of receipt.

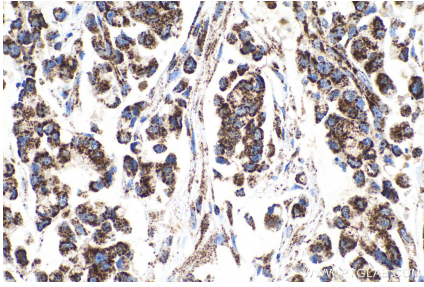
## Background

HSD17B10 (3-hydroxyacyl-CoA dehydrogenase type-2) is a multifunctional mitochondrial enzyme that acts on a wide spectrum of substrates, including neuroactive steroids, alcohols, leucine, and fatty acids, with a preference for short-chain methyl-branched acyl-CoAs. It has 2 isoforms produced by alternative splicing. Defects in HSD17B10 are the cause of 2-methyl-3-hydroxybutyryl-CoA dehydrogenase deficiency (MHBD deficiency) and mental retardation syndromic X-linked type 10 (MRXS10).

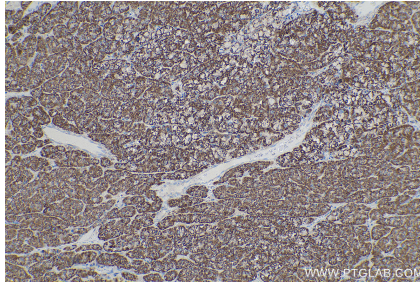
## Synonyms

17 beta HSD 10, 17b HSD10, ABAD, CAMR, DUPXp11.22, ERAB, HADH2, HCD2, HSD17B10, MHBD, MRPP2, MRX17, MRX31, MRXS10, SCHAD, SDR5C1, Type II HADH, XH98G2

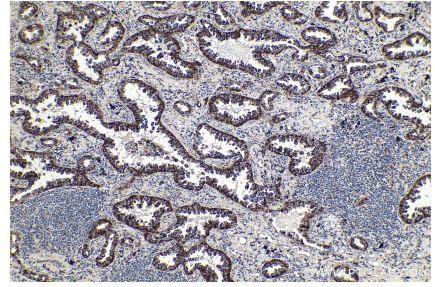
## Selected Validation Data



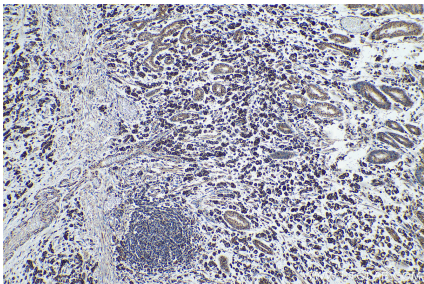
Immunohistochemical analysis of paraffin-embedded human colon cancer tissue slide using KHC0543 (HSD17B10 IHC Kit).



Immunohistochemical analysis of paraffin-embedded human liver cancer tissue slide using KHC0543 (HSD17B10 IHC Kit).



Immunohistochemical analysis of paraffin-embedded human lung cancer tissue slide using KHC0543 (HSD17B10 IHC Kit).



Immunohistochemical analysis of paraffin-embedded human stomach cancer tissue slide using KHC0543 (HSD17B10 IHC Kit).