

IHC*easy* EEF1A1/EEF1A2 Ready-To-Use IHC Kit

Catalog Number: **KHC0563**

General Information

Sample type:
FFPE tissue
Cited sample type:
Reactivity:
Human, Mouse, Rat
Cited Reactivity:

Assay type:
Immunohistochemistry
Primary antibody type:
Mouse Monoclonal
Secondary antibody type:
Polymer-HRP-Goat anti-Mouse

Kit Component

Component	Size	Concentration
Antigen Retrieval Buffer	100 mL	50×
Washing Buffer	100 mL ×2	20×
Blocking Buffer	5 mL	RTU
Primary Antibody	5 mL	RTU
Secondary Antibody	5 mL	RTU
Chromogen Component A	0.2 mL	RTU
Chromogen Component B	4 mL	RTU
Signal Enhancer	5 mL	RTU
Counter Staining Reagent	5 mL	RTU
Mounting Media	5 mL	RTU
Control Slide	1 slide (Optional)	FFPE
Datasheet	1 Copy	
Manual	1 Copy	

Storage Instructions

All the reagents are stored at 2-8°C. The kit is stable for 6 months from the date of receipt.

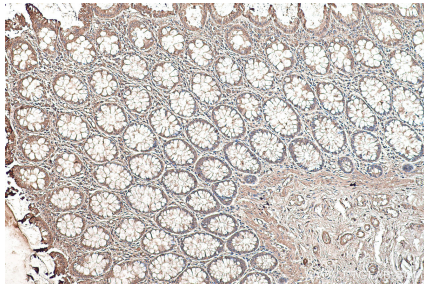
Background

eEF1A2 is one of two isoforms (eEF1A1 and eEF1A2) of eukaryotic elongation factor 1 alpha (eEF1A or eEF1 α). The two isoforms share more than 90% sequence identity and have the similar function that being a protein translation factor involved in protein synthesis. Addition, eEF1A2 plays an important role in cell cycle regulation, heat-shock response, aging, posttranslational modifications, and signal transduction. eEF1A2 is expressed in heart, brain tissue, diaphragm and skeletal muscle while eEF1A1 is expressed ubiquitously. And the eEF1A2 protein stimulates the phospholipid signaling and activates the Akt-dependent cell migration and actin remodeling that ultimately favors tumorigenesis. It is reported that eEF1A2 was related with kinds of cancers such as ovarian cancer, prostate cancer, pancreatic cancer, breast cancer and lung cancer.

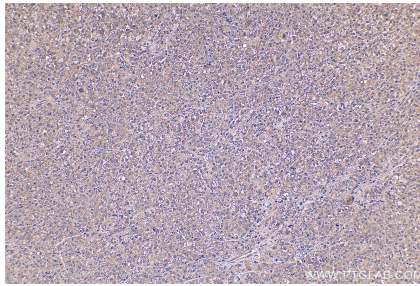
Synonyms

EEF1A2, eEF1A-2, EEF1AL, EF-1-alpha-2, Elongation factor 1-alpha 2

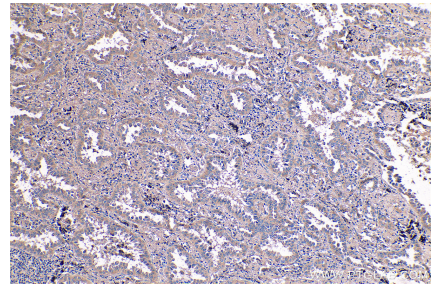
Selected Validation Data



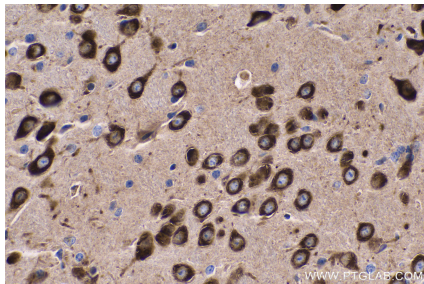
Immunohistochemical analysis of paraffin-embedded human colon tissue slide using KHC0563 (EEF1A1/EEF1A2 IHC Kit).



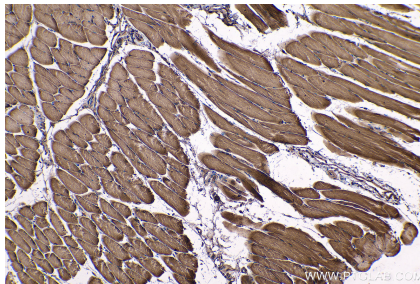
Immunohistochemical analysis of paraffin-embedded human liver cancer tissue slide using KHC0563 (EEF1A1/EEF1A2 IHC Kit).



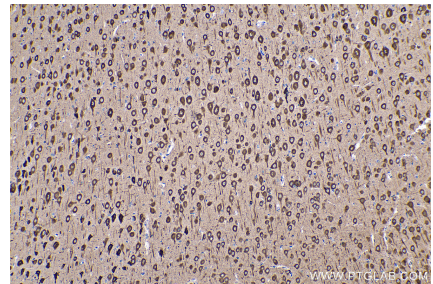
Immunohistochemical analysis of paraffin-embedded human lung cancer tissue slide using KHC0563 (EEF1A1/EEF1A2 IHC Kit).



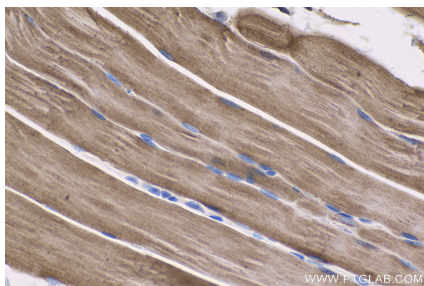
Immunohistochemical analysis of paraffin-embedded mouse brain tissue slide using KHC0563 (EEF1A1/EEF1A2 IHC Kit).



Immunohistochemical analysis of paraffin-embedded mouse skeletal muscle tissue slide using KHC0563 (EEF1A1/EEF1A2 IHC Kit).



Immunohistochemical analysis of paraffin-embedded rat brain tissue slide using KHC0563 (EEF1A1/EEF1A2 IHC Kit).



Immunohistochemical analysis of paraffin-embedded rat skeletal muscle tissue slide using KHC0563 (EEF1A1/EEF1A2 IHC Kit).