

IHC*easy* CFLAR/FLIP Ready-To-Use IHC Kit

Catalog Number: **KHC0610**

General Information

Sample type:
FFPE tissue
Cited sample type:
Reactivity:
Human
Cited Reactivity:

Assay type:
Immunohistochemistry
Primary antibody type:
Rabbit Polyclonal
Secondary antibody type:
Polymer-HRP-Goat anti-Rabbit

Kit Component

Component	Size	Concentration
Antigen Retrieval Buffer	100 mL	50×
Washing Buffer	100 mL ×2	20×
Blocking Buffer	5 mL	RTU
Primary Antibody	5 mL	RTU
Secondary Antibody	5 mL	RTU
Chromogen Component A	0.2 mL	RTU
Chromogen Component B	4 mL	RTU
Signal Enhancer	5 mL	RTU
Counter Staining Reagent	5 mL	RTU
Mounting Media	5 mL	RTU
Control Slide	1 slide (Optional)	FFPE
Datasheet	1 Copy	
Manual	1 Copy	

Storage Instructions

All the reagents are stored at 2-8°C. The kit is stable for 6 months from the date of receipt.

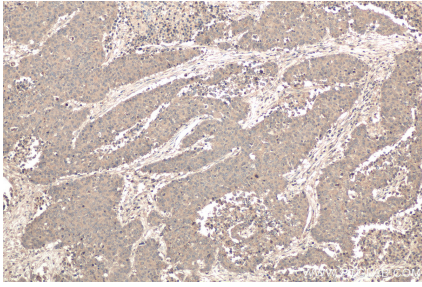
Background

CFLAR, also named as CASH, CASP8AP1, CLARP, MRIT, Casper, c-FLIP and I-FLICE, belongs to the peptidase C14A family. It is an apoptosis regulator protein which may function as a crucial link between cell survival and cell death pathways in mammalian cells. CFLAR acts as an inhibitor of TNFRSF6 mediated apoptosis. It can be cleaved to be 2 fragments P43 and P12. P43 is likely retained in the death-inducing signaling complex (DISC) thereby blocking further recruitment and processing of caspase-8 at the complex. Full length and shorter isoforms have been shown either to induce apoptosis or to reduce TNFRSF-triggered apoptosis. CFLAR lacks enzymatic (caspase) activity.

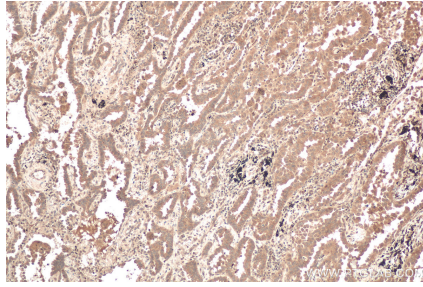
Synonyms

c FLIP, c FLIPL, c FLIPR, c FLIPS, CASH, CASP8AP1, Caspase eight related protein, Caspase homolog, Casper, CFLAR, CFLAR/FLIP, CLARP, FLAME, FLAME 1, FLAME1, FLIP, I FLICE, Inhibitor of FLICE, MRIT, Usurpin

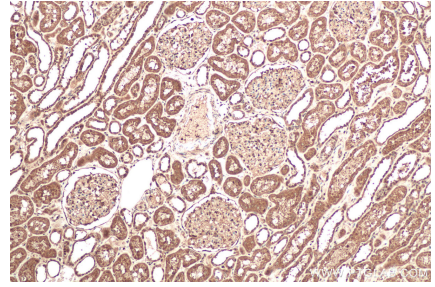
Selected Validation Data



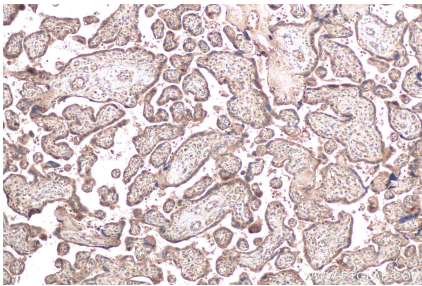
Immunohistochemical analysis of paraffin-embedded human colon cancer tissue slide using KHC0610 (CFLAR/FLIP IHC Kit).



Immunohistochemical analysis of paraffin-embedded human lung cancer tissue slide using KHC0610 (CFLAR/FLIP IHC Kit).



Immunohistochemical analysis of paraffin-embedded human kidney tissue slide using KHC0610 (CFLAR/FLIP IHC Kit).



Immunohistochemical analysis of paraffin-embedded human placenta tissue slide using KHC0610 (CFLAR/FLIP IHC Kit).