

# IHC*easy* HO-1/HMOX1 Ready-To-Use IHC Kit

Catalog Number: **KHC0624**

## General Information

**Sample type:**  
FFPE tissue

**Cited sample type:**

**Reactivity:**  
Human, Rat

**Cited Reactivity:**

**Assay type:**  
Immunohistochemistry

**Primary antibody type:**  
Mouse Monoclonal

**Secondary antibody type:**  
Polymer-HRP-Goat anti-Mouse

## Kit Component

Component	Size	Concentration
Antigen Retrieval Buffer	100 mL	50×
Washing Buffer	100 mL ×2	20×
Blocking Buffer	5 mL	RTU
Primary Antibody	5 mL	RTU
Secondary Antibody	5 mL	RTU
Chromogen Component A	0.2 mL	RTU
Chromogen Component B	4 mL	RTU
Signal Enhancer	5 mL	RTU
Counter Staining Reagent	5 mL	RTU
Mounting Media	5 mL	RTU
Control Slide	1 slide (Optional)	FFPE
Datasheet	1 Copy	
Manual	1 Copy	

## Storage Instructions

All the reagents are stored at 2-8°C. The kit is stable for 6 months from the date of receipt.

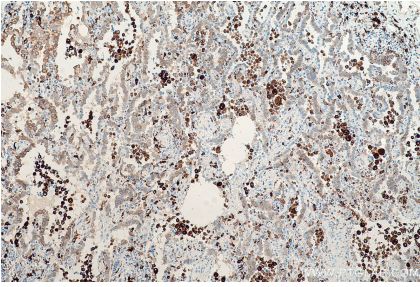
## Background

Heme oxygenase (HMOX1) catalyzes the first and rate-limiting step in the degradation of heme to yield equimolar quantities of biliverdin I $\alpha$ , carbon monoxide (CO), and iron. It has 3 isoforms: HO-1 is highly inducible, whereas HO-2 and HO-3 are constitutively expressed. Heme oxygenase-1 (HO-1) is expressed in many tissues and vascular smooth muscle cells, and endothelial cells and has been identified as an important endogenous protective factor induced in many cell types by various stimulants, such as hemolysis, inflammatory cytokines, oxidative stress, heat shock, heavy metals, and endotoxin. And the full-length HO-1 is very unstable and susceptible to truncation that generates an inactive, soluble form.

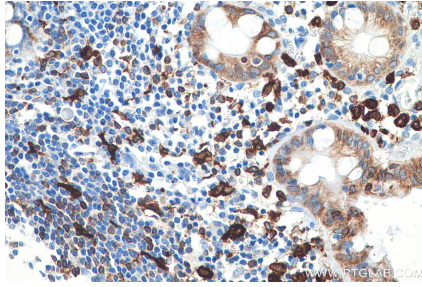
## Synonyms

bK286B10, heme oxygenase (decycling) 1, Heme oxygenase 1, HMOX1, HO, HO 1, HO1, HO-1, HO-1/HMOX1, HSP32

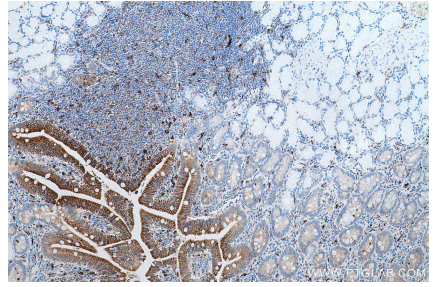
## Selected Validation Data



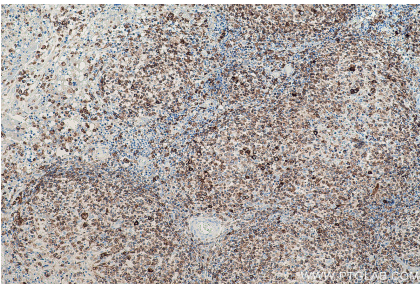
Immunohistochemical analysis of paraffin-embedded human lung cancer tissue slide using KHC0624 (HO-1/HMOX1 IHC Kit).



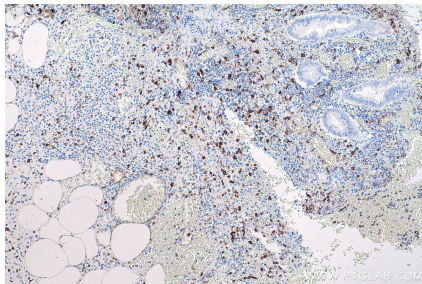
Immunohistochemical analysis of paraffin-embedded human colon tissue slide using KHC0624 (HO-1/HMOX1 IHC Kit).



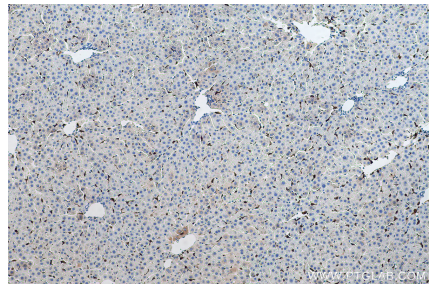
Immunohistochemical analysis of paraffin-embedded human stomach cancer tissue slide using KHC0624 (HO-1/HMOX1 IHC Kit).



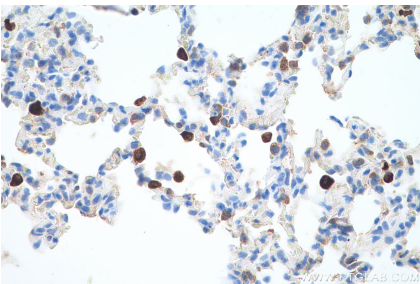
Immunohistochemical analysis of paraffin-embedded human lymphoma tissue slide using KHC0624 (HO-1/HMOX1 IHC Kit).



Immunohistochemical analysis of paraffin-embedded human appendicitis tissue slide using KHC0624 (HO-1/HMOX1 IHC Kit).



Immunohistochemical analysis of paraffin-embedded rat liver tissue slide using KHC0624 (HO-1/HMOX1 IHC Kit).



Immunohistochemical analysis of paraffin-embedded rat lung tissue slide using KHC0624 (HO-1/HMOX1 IHC Kit).