

IHC*easy* HSD17B2 Ready-To-Use IHC Kit

Catalog Number: **KHC0625**

General Information

Sample type:
FFPE tissue
Cited sample type:
Reactivity:
Human
Cited Reactivity:

Assay type:
Immunohistochemistry
Primary antibody type:
Rabbit Polyclonal
Secondary antibody type:
Polymer-HRP-Goat anti-Rabbit

Kit Component

Component	Size	Concentration
Antigen Retrieval Buffer	100 mL	50×
Washing Buffer	100 mL ×2	20×
Blocking Buffer	5 mL	RTU
Primary Antibody	5 mL	RTU
Secondary Antibody	5 mL	RTU
Chromogen Component A	0.2 mL	RTU
Chromogen Component B	4 mL	RTU
Signal Enhancer	5 mL	RTU
Counter Staining Reagent	5 mL	RTU
Mounting Media	5 mL	RTU
Control Slide	1 slide (Optional)	FFPE
Datasheet	1 Copy	
Manual	1 Copy	

Storage Instructions

All the reagents are stored at 2-8°C. The kit is stable for 6 months from the date of receipt.

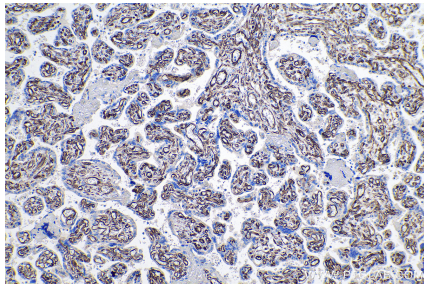
Background

HSD17B2(Estradiol 17-beta-dehydrogenase 2) is also named as 17-beta-HSD 2,20-alpha-HSD,EDH17B2 and belongs to the short-chain dehydrogenases/reductases (SDR) family. Based on the pivotal role of HSD17B2 gene product in the estrogen metabolism pathway, it may be considered as a putative candidate gene that could possibly explain a fraction of the remaining familial breast cancer risk and it is unlikely to play a role as a high penetrance gene in breast cancer predisposition.

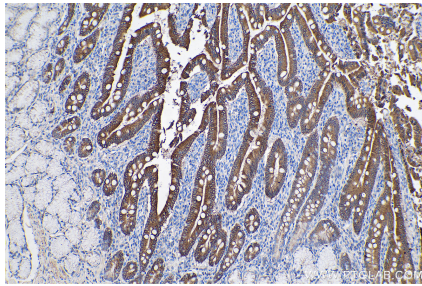
Synonyms

17 beta HSD 2, 17 β HSD2, 20 alpha HSD, E2DH, EDH17B2, HSD17, HSD17B2, SDR9C2

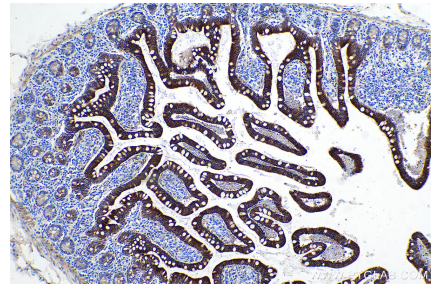
Selected Validation Data



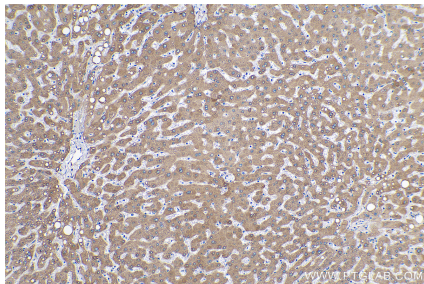
Immunohistochemical analysis of paraffin-embedded human placenta tissue slide using KHC0625 (HSD17B2 IHC Kit).



Immunohistochemical analysis of paraffin-embedded human stomach cancer tissue slide using KHC0625 (HSD17B2 IHC Kit).



Immunohistochemical analysis of paraffin-embedded human small intestine tissue slide using KHC0625 (HSD17B2 IHC Kit).



Immunohistochemical analysis of paraffin-embedded human liver tissue slide using KHC0625 (HSD17B2 IHC Kit).