

IHC*easy* NCL Ready-To-Use IHC Kit

Catalog Number: **KHC0661**

General Information

Sample type:
FFPE tissue
Cited sample type:
Reactivity:
Human, Mouse
Cited Reactivity:

Assay type:
Immunohistochemistry
Primary antibody type:
Rabbit Polyclonal
Secondary antibody type:
Polymer-HRP-Goat anti-Rabbit

Kit Component

Component	Size	Concentration
Antigen Retrieval Buffer	100 mL	50×
Washing Buffer	100 mL ×2	20×
Blocking Buffer	5 mL	RTU
Primary Antibody	5 mL	RTU
Secondary Antibody	5 mL	RTU
Chromogen Component A	0.2 mL	RTU
Chromogen Component B	4 mL	RTU
Signal Enhancer	5 mL	RTU
Counter Staining Reagent	5 mL	RTU
Mounting Media	5 mL	RTU
Control Slide	1 slide (Optional)	FFPE
Datasheet	1 Copy	
Manual	1 Copy	

Storage Instructions

All the reagents are stored at 2-8°C. The kit is stable for 6 months from the date of receipt.

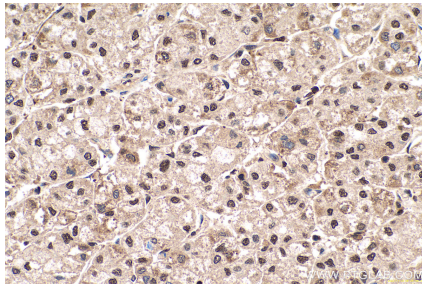
Background

Nucleolin, also known as C23, involved in the control of transcription of ribosomal RNA (rRNA) genes by RNA polymerase I, in nucleocytoplasmic transportation of ribosomal components, and in ribosome maturation and assembly. It associated with intranucleolar chromatin and pre-ribosomal particles, and induced chromatin decondensation by binding to histone H1. Also it has a role in the process of transcriptional elongation.

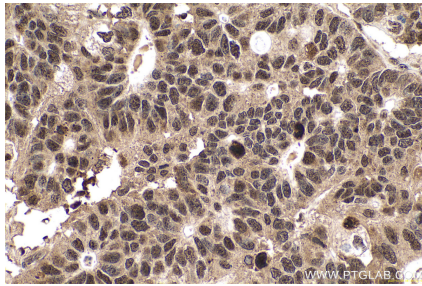
Synonyms

C23, NCL, nucleolin, Protein C23

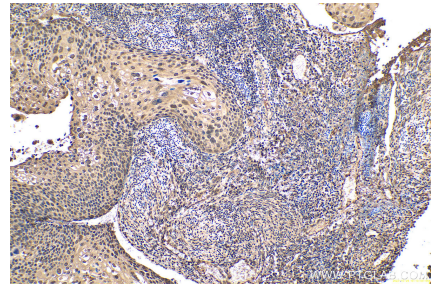
Selected Validation Data



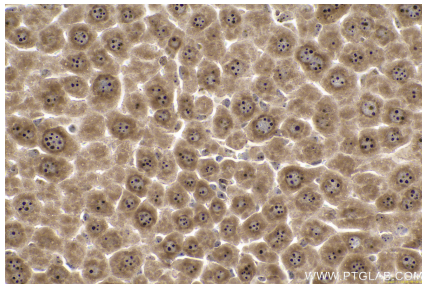
Immunohistochemical analysis of paraffin-embedded human liver cancer tissue slide using KHC0661 (NCL IHC Kit).



Immunohistochemical analysis of paraffin-embedded human stomach cancer tissue slide using KHC0661 (NCL IHC Kit).



Immunohistochemical analysis of paraffin-embedded human cervical cancer tissue slide using KHC0661 (NCL IHC Kit).



Immunohistochemical analysis of paraffin-embedded mouse liver tissue slide using KHC0661 (NCL IHC Kit).