

# IHC*easy* YWHAB Ready-To-Use IHC Kit

Catalog Number: **KHC0701**

## General Information

Sample type:  
FFPE tissue  
Cited sample type:  
Reactivity:  
Human, Mouse, Rat  
Cited Reactivity:

Assay type:  
Immunohistochemistry  
Primary antibody type:  
Rabbit Polyclonal  
Secondary antibody type:  
Polymer-HRP-Goat anti-Rabbit

## Kit Component

Component	Size	Concentration
Antigen Retrieval Buffer	100 mL	50×
Washing Buffer	100 mL ×2	20×
Blocking Buffer	5 mL	RTU
Primary Antibody	5 mL	RTU
Secondary Antibody	5 mL	RTU
Chromogen Component A	0.2 mL	RTU
Chromogen Component B	4 mL	RTU
Signal Enhancer	5 mL	RTU
Counter Staining Reagent	5 mL	RTU
Mounting Media	5 mL	RTU
Control Slide	1 slide (Optional)	FFPE
Datasheet	1 Copy	
Manual	1 Copy	

## Storage Instructions

All the reagents are stored at 2-8°C. The kit is stable for 6 months from the date of receipt.

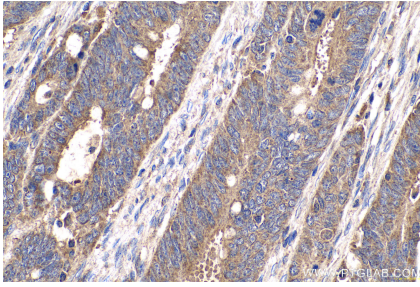
## Background

YWHAB (also known as 14-3-3 beta) is a member of 14-3-3 proteins which were the first phosphoserine/phosphothreonine-binding proteins to be discovered. 14-3-3 family members interact with a wide spectrum of proteins and possess diverse functions. Mammals express seven distinct 14-3-3 isoforms (gamma, epsilon, beta, zeta, sigma, theta, tau) that form multiple homo- and hetero- dimers. 14-3-3 proteins display the highest expression levels in the brain, and have been implicated in several neurodegenerative diseases, including Alzheimer's disease and amyotrophic lateral sclerosis.

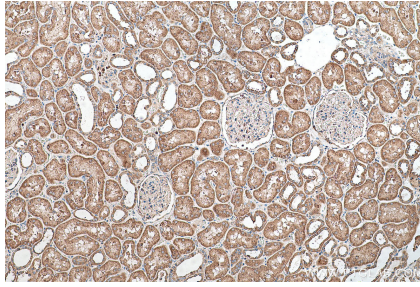
## Synonyms

14 3 3, 14 3 3 alpha, 14 3 3 protein beta, 14 3 3 protein beta alpha, 14 3 3 protein beta/alpha, GW128, HS1, KCIP 1, Protein 1054, YWHAB

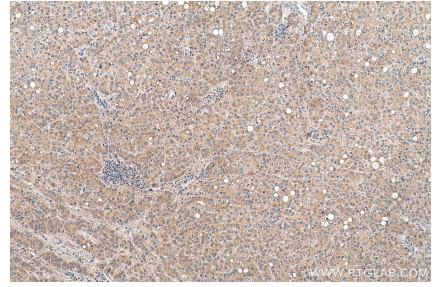
## Selected Validation Data



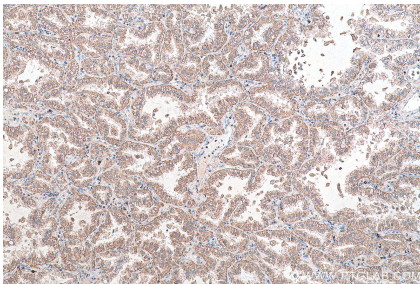
Immunohistochemical analysis of paraffin-embedded human colon cancer tissue slide using KHC0701 (YWHAB IHC Kit).



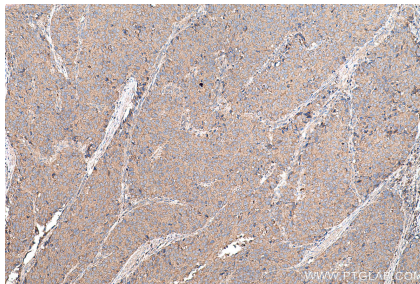
Immunohistochemical analysis of paraffin-embedded human kidney tissue slide using KHC0701 (YWHAB IHC Kit).



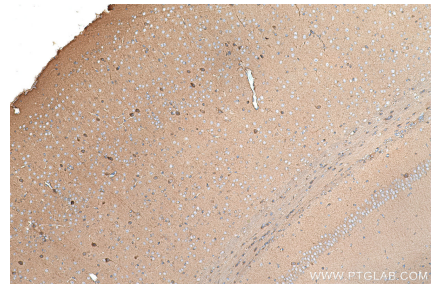
Immunohistochemical analysis of paraffin-embedded human liver cancer tissue slide using KHC0701 (YWHAB IHC Kit).



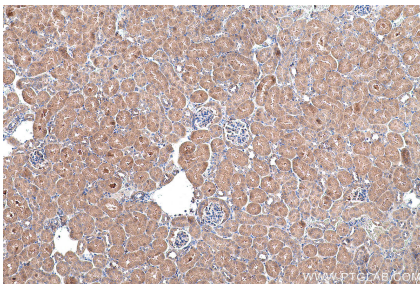
Immunohistochemical analysis of paraffin-embedded human lung cancer tissue slide using KHC0701 (YWHAB IHC Kit).



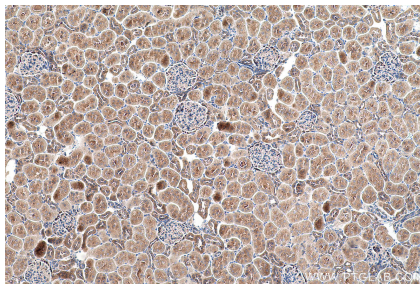
Immunohistochemical analysis of paraffin-embedded human stomach cancer tissue slide using KHC0701 (YWHAB IHC Kit).



Immunohistochemical analysis of paraffin-embedded mouse brain tissue slide using KHC0701 (YWHAB IHC Kit).



Immunohistochemical analysis of paraffin-embedded mouse kidney tissue slide using KHC0701 (YWHAB IHC Kit).



Immunohistochemical analysis of paraffin-embedded rat kidney tissue slide using KHC0701 (YWHAB IHC Kit).